

# Delta UPS Amplon Family

N Gen3 Series, Single Phase, 1/2/3 kVA

## Small and Reliable Power Guardian for Office & Home Critical Appliances

The Amplon N Gen3 Series 1-3 kVA is an online double-conversion uninterruptible power system (UPS) in a best-in-class compact size tower design. It supplies clean sine-wave input power for IT and other sensitive equipment and prevents work interruption, data loss or equipment damage from voltage sags, spikes, harmonic distortion and other power failures.



### High Availability

- Output power factor 0.9 provides more wattage to critical loads
- True online double-conversion topology and zero transfer time to battery mode
- Generator compatibility ensures clean, uninterrupted power to the loads during an extended power outage

### Green with Low TCO

- Capable of working in harsh electrical environments with wide I/P voltage range to minimize battery usage
- Excellent overload capacity allows the overload condition to continue within the timeframe
- AC-AC efficiency up to 90%, and ECO mode efficiency up to 95% for better energy savings

### Easy Management

- The intuitive LCD display provides UPS status information with the ability to configure locally
- Supports multiple communication interfaces, including USB port, RS-232 port and Mini slot (option for mini SNMP, mini Modbus and mini relay I/O card) for remote monitoring and configuration
- Battery self-test function ensures early detection of the battery status when batteries need to be replaced



IT



Telecom



Industrial



Transportation



Financial



Government



SME



Retail



## Rear Panel

### 1 kVA



### 2 kVA

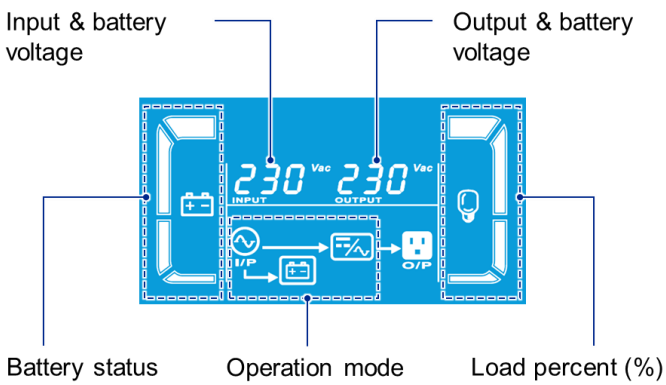


### 3 kVA



- 1 USB port
- 2 RS-232 port
- 3 Input circuit breaker
- 4 AC input
- 5 Mini slot
- 6 Output socket
- 7 Output terminal

## LCD



## Runtime Table

### 1 kVA

Load	90 W	180 W	270 W	360 W	450 W	540 W	630 W	720 W	810 W	900 W
Backup Time	57.5	26.9	16.8	11.9	9.1	7.3	6.1	4.3	3.6	3.1

### 2 kVA

Load	180 W	360 W	540 W	720 W	900 W	1080 W	1260 W	1440 W	1620 W	1800 W
Backup Time	61.1	28.3	17.7	12.5	9.5	7.7	6.5	4.5	3.8	3.3

### 3 kVA

Load	270 W	540 W	810 W	1080 W	1350 W	1620 W	1890 W	2160 W	2430 W	2700 W
Backup Time	67.1	29.4	18.1	12.5	10.3	8.2	6.9	4.9	4.2	3.6

Unit: min

## Technical Specifications

Model	NX-1K	NX-2K	NX-3K
Topology	Online double-conversion		
Power Rating	1 kVA 0.9 kW	2 kVA 1.8 kW	3 kVA 2.7 kW
<b>INPUT</b>			
Nominal Voltage	220/230 Vac, 1 phase 2 Wire (1PH+PE)		
Voltage Range	180~285 Vac (full load); 120~180 Vac (with derating to 60~100%)		
Frequency	50/60 Hz ± 10 Hz		
Power Factor	> 0.99 (full load)		
Connection	IEC C14 x1		IEC C20 x1
<b>OUTPUT</b>			
Nominal Voltage	208 <sup>(1)</sup> , 220, 230, 240 Vac		
Voltage Regulation	±1%		
Frequency	50/60 Hz ± 3 Hz		
Total Harmonic Distortion (THDv)	≤ 3% (linear load)		
Power Factor	0.9		
Connection	IEC C13 x4		IEC C13 x4 + Terminal
Overload Capability	≤ 105%: continuous; 106~110%: 10 mins.; 111~130%: 30s.; 131~150%: 3s.; > 150%: immediately		
Current Crest Ratio	3:1		
<b>EFFICIENCY</b>			
Online Mode	Up to 90%		
ECO Mode	Up to 95%		
<b>BATTERY</b>			
Battery Type	VRLA		
Nominal Voltage	24 Vdc	48 Vdc	72 Vdc
Quantity	2 pcs	4 pcs	6 pcs
Runtime	100% load 70% load	3.1 mins 6.1 mins	3.3 mins 6.5 mins
Charge Current	1 A		
<b>COMMUNICATION INTERFACE</b>			
Display	LCD screen with LED indicators		
Port	USB, RS-232, mini slot (option for mini SNMP, mini Modbus and mini relay I/O card)		
Audible Alarm	Battery mode, Low battery, Overload, Fault, Bypass mode		
<b>PHYSICAL</b>			
Dimensions (W x D x H)	145 x 282 x 220 mm	145 x 397 x 220 mm	190 x 421 x 318 mm
Net Weight	9.2 kg	16.8 kg	27 kg
Packing Dimensions (W x D x H)	230 x 360 x 325 mm	230 x 590 x 355 mm	320 x 560 x 460 mm
Packing Weight	10.3 kg	18.6 kg	28.4 kg
<b>ENVIRONMENT</b>			
Operating Temperature	0~50°C (40~50°C de-rating to 70% load)		
Humidity	20~90% (non-condensing)		
Audible Noise <sup>(2)</sup>	< 45 dBA		
Altitude	0~4,000 m (derating 1%/100 m from 1,000~4,000 m)		
Storage Temperature	-20 to +50°C		
Ingress Protection	IP20		
<b>CONFORMANCE</b>			
Safety	CE, TISI		
EMC	IEC 62040-2		
Performance	IEC 62040-3		
Sustainability	ROHS, REACH		

(1) De-rating to 70% load

(2) Audible noise test with UPS < 75% load at 25°C in online mode

All specifications are subject to change without prior notice.

## Management Solution

### UPSentry

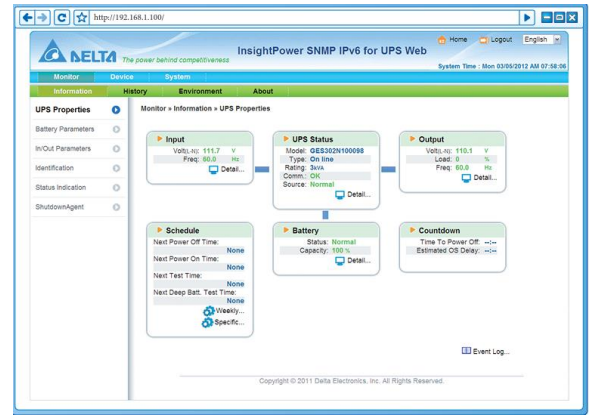
- Supports RS-232 & USB communication
- Scheduling shutdown, restart and battery test
- Event tracking

### ShutdownAgent

- Provides a graceful unattended shutdown of multiple computer systems over a network

### SNMP IPv6 (optional)

- Remote UPS management from any workstation through internet or intranet
- UPS and system function configuration from any client (password protected)
- Event logs and data tracking



## What's in the Box

### Standard Accessories

N Gen3 UPS

User manual

USB cable (1.5 m)

AC input cable (1.5 m)

Free ShutdownAgent software for local UPS status and shutdown

Free UPSentry software for remote network management

## Optional Accessories

### UPS Management Accessories

Mini SNMP IPv6 (Part number: SCMS100035)	Manages UPS and system functions securely and adjusts parameters through SNMP management stations or Internet Browsers using HTTP forms.
Mini Relay I/O card (Part number: 3915101864-S)	Offers 6 relay output contacts to monitor status and 2 input contacts for simple shutdown and battery testing in UPS management.
Mini Modbus Card (Part number: 3915101865-S)	Supports Modbus communication with a PC via RS-485 and RS-232 interfaces, allowing for flexible and simultaneous use.