



# Delta InfraSuite Micro Data Center

## Vari°ROW® 5.6-25.1kW, DX Air-Cooled

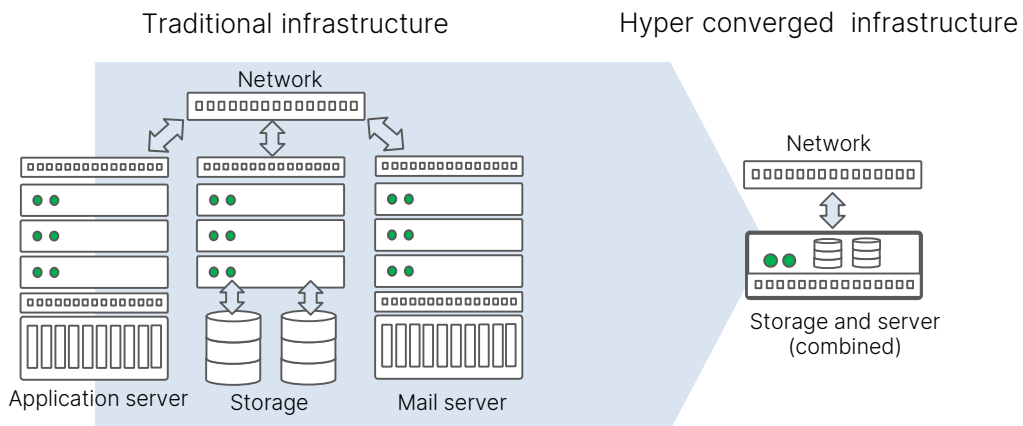
### | Features

- **Easy Deployment:** Pre-configured and fully tested solution ensures minimal on-site engineering and installation is required to deploy your data center significantly reducing your CAPEX and time to deploy.
- **Easy Management:** Design once and deploy anywhere with this standardized architecture and remote monitoring platform you have total visibility of critical assets, reducing risk, operational costs and improving service levels.
- **Easy Expansion:** A stand-alone fully functional solution. You can plan and deploy your IT assets step by step as business grows. Buy small and scale up, investing only when necessary.



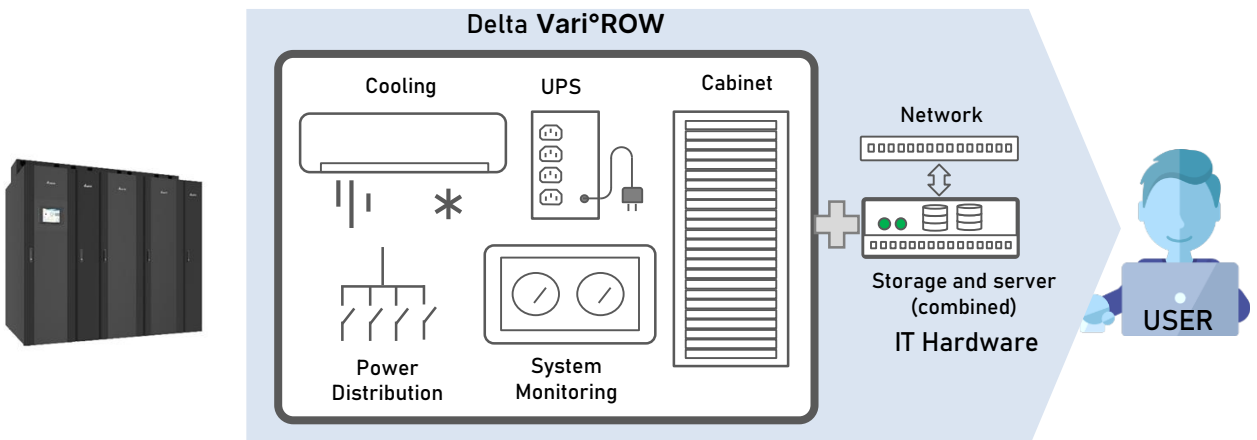
## | Ready for the era of converged infrastructure

Ending the traditional ways of implementing IT infrastructure by dedicated server which consumes lot of space, power consumption and hardly maintain. Converged infrastructure has rapidly growth due to merit virtualization technology. Further moving forward to hyper-converge eventually obtains super flexibility from all software defined elements, shrink down system size, cost and maintenance complexity. Virtualized and clustering, furthermore, improves system reliability.



## | Pre-fabricated all-in-one datacenter and ready to deploy

Delta's edge ready Micro Data Centers eliminate the need to for complex detailed room designs and can be rapidly deployed in a matter of weeks rather than months. Our five standard designs provide you with all of the features of a traditional data center environment in one highly integrated pretested environment.



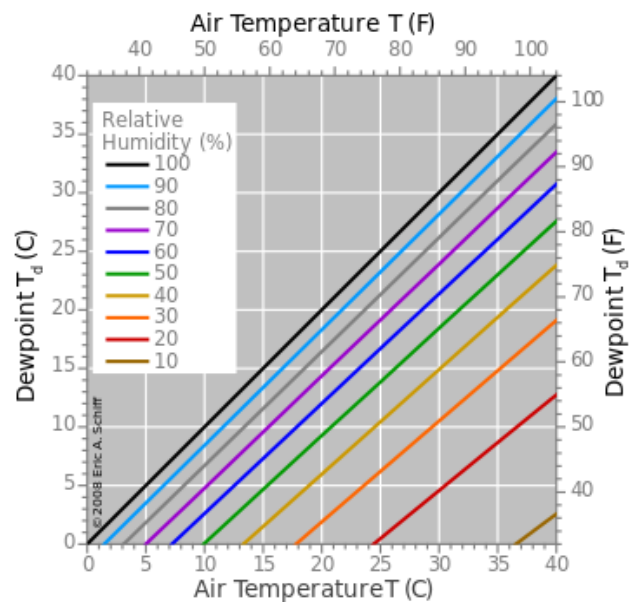
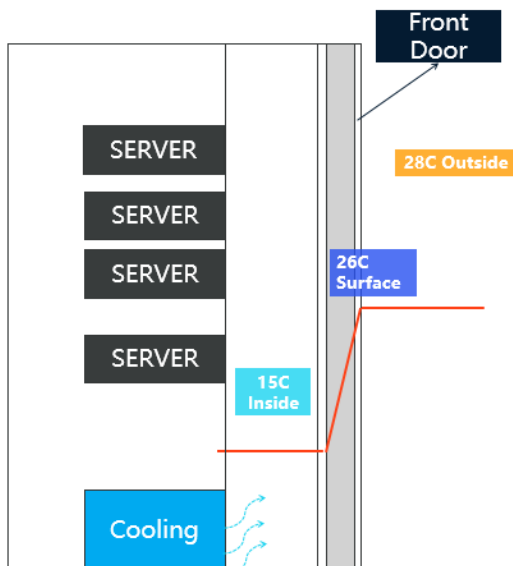
## | No more condensation

Hot moisture air cooled by cold object whose temperature lower than dew point will form condensate on the surface. Delta's MDC is specially designed to prevent this by using transparent thermal insulation material in addition to glass front door. This helps to keep front glass door temperature above dew point so that condensate is avoided.



## | Heat Transfer Basics

Adopt double layer front door and thermal insulation improving external door temperature to prevent condensate.



## Cooling System Design

- Control supply air temperature no less than dew point temperature.
- Capacity modulating means flexibility with supply temperature adjusting and same time cooling effect reached.

## Excellent Cooling Performance

- Closed coupled Cold/Hot Aisle for high efficiency.
- Double door and supply temperature control to prevent condensate.



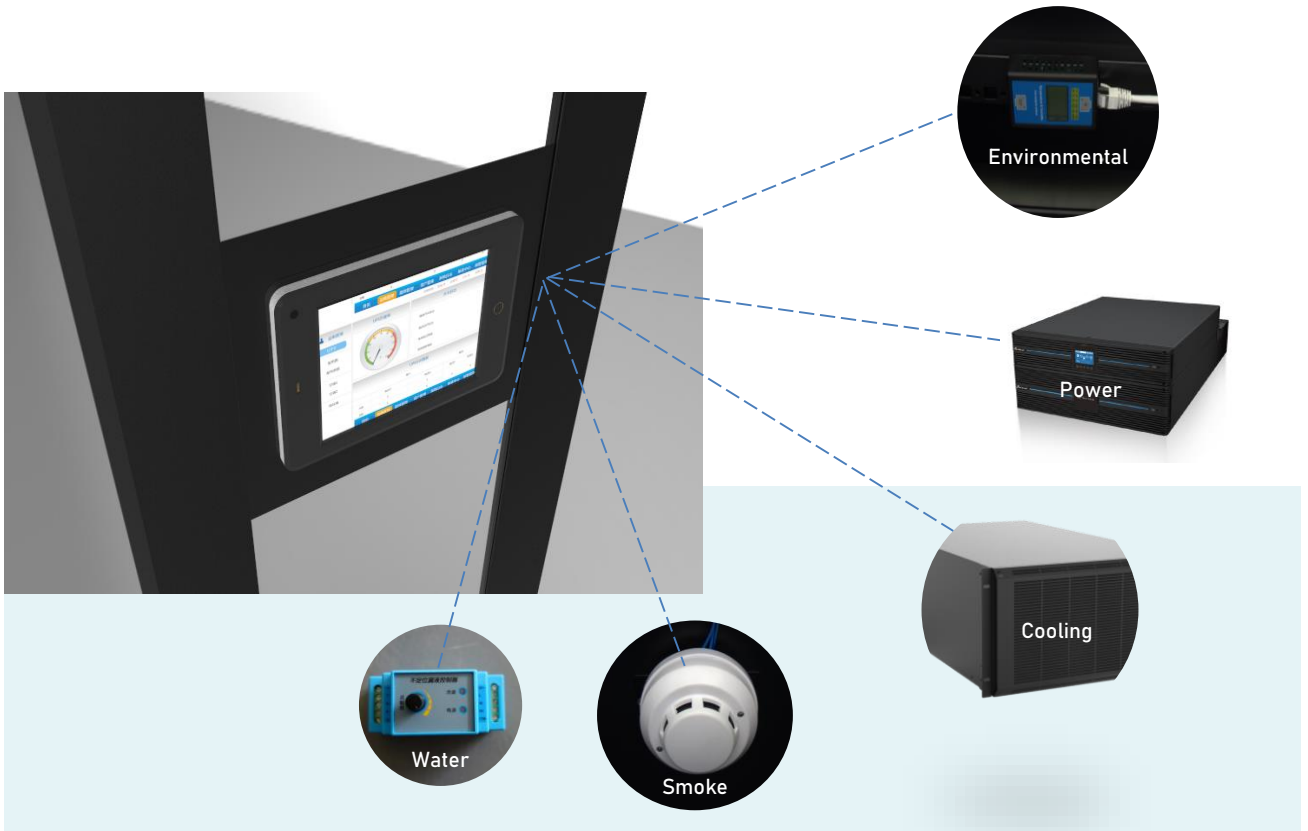
## Highly Flexible for Future Expansion

1100 to 1500mm depths available with additional 42U rack add-on is applicable to increase available U-space\* of Delta's micro datacenter obtaining extremely flexibility for future IT infrastructure expansion. 600mm and 800mm additional rack is available option to serve IT requirements. Custom depths can be designed on request for special applications.

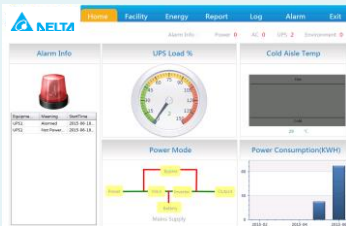


\* Initial/remaining cooling capacity of cooling unit must be considered.

# Comprehensive micro DCIM monitoring system



Overall operation dashboard



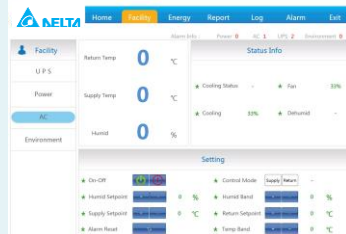
Power consumption and PUE



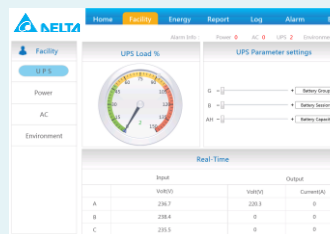
Event log

Date	Time	Content
2023-08-28	10:00:00	UPS Load % > 90%
2023-08-28	10:05:00	UPS Load % > 95%
2023-08-28	10:10:00	UPS Load % > 98%
2023-08-28	10:15:00	UPS Load % > 100%
2023-08-28	10:20:00	UPS Load % > 100%
2023-08-28	10:25:00	UPS Load % > 100%
2023-08-28	10:30:00	UPS Load % > 100%
2023-08-28	10:35:00	UPS Load % > 100%
2023-08-28	10:40:00	UPS Load % > 100%
2023-08-28	10:45:00	UPS Load % > 100%
2023-08-28	10:50:00	UPS Load % > 100%
2023-08-28	10:55:00	UPS Load % > 100%
2023-08-28	11:00:00	UPS Load % > 100%
2023-08-28	11:05:00	UPS Load % > 100%
2023-08-28	11:10:00	UPS Load % > 100%
2023-08-28	11:15:00	UPS Load % > 100%
2023-08-28	11:20:00	UPS Load % > 100%
2023-08-28	11:25:00	UPS Load % > 100%
2023-08-28	11:30:00	UPS Load % > 100%
2023-08-28	11:35:00	UPS Load % > 100%
2023-08-28	11:40:00	UPS Load % > 100%
2023-08-28	11:45:00	UPS Load % > 100%
2023-08-28	11:50:00	UPS Load % > 100%
2023-08-28	11:55:00	UPS Load % > 100%
2023-08-28	12:00:00	UPS Load % > 100%

Critical component status: Cooling



Critical component status: UPS

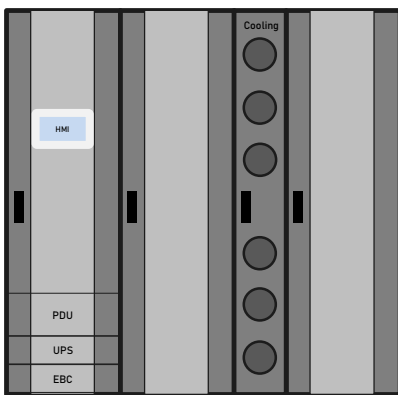
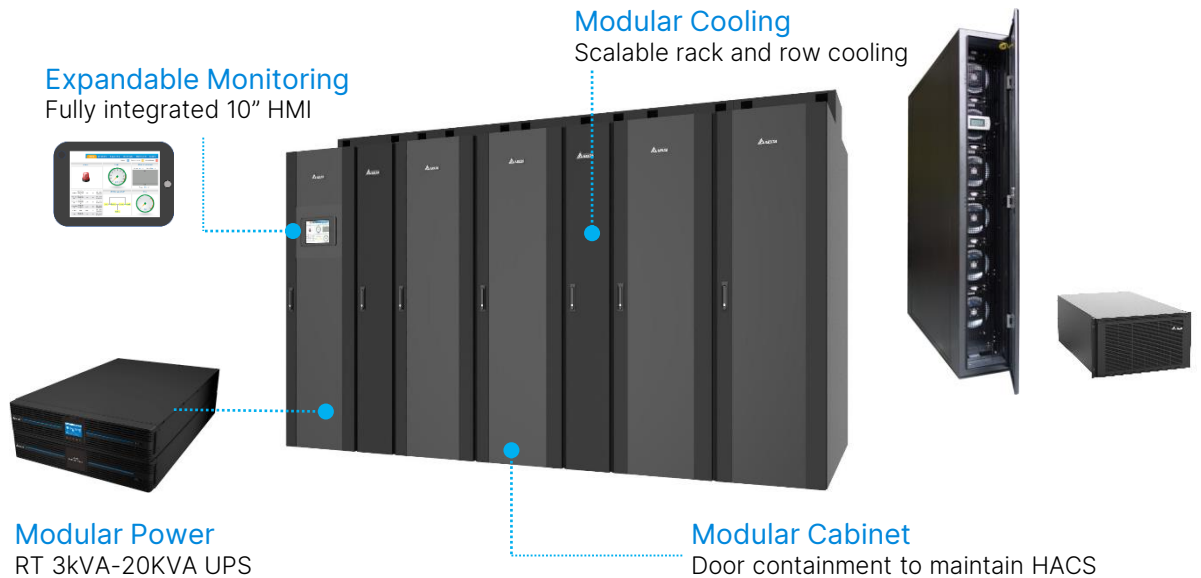


Critical component status: Hot/Cold Aisle



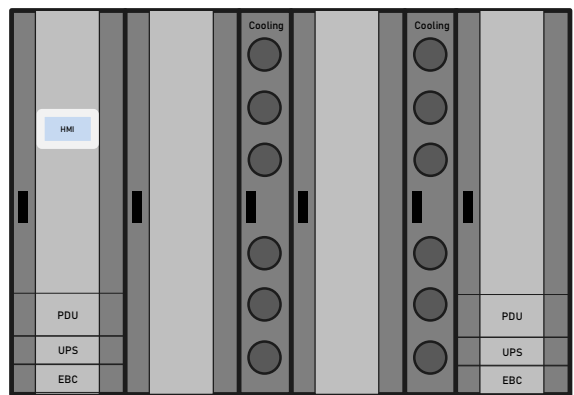
# Vari°Row® Configurable Micro-datacenter

Delta micro-datacentre is designed and engineered with expansion in mind. It allows IT professionals to smoothly, plan, grow and manage critical assets as they expand their infrastructure. Cabinet 1 contains power input, UPS batteries, DB and HMI.



## Basic N-configuration

- Single UPS from 3kVA up to 30kVA.
- Single Row Cooling 5.6kW up to 30kW.
- Single PDU with bypass function.



## N+1 or 2N-configuration

- Dual UPS from 3kVA up to 30kVA.
- Dual Row Cooling 5.6kW up to 30kW with N+1 or 2N configuration.
- Single PDU with N+1 or Dual PDU to support dual feeder configuration.

# Flexible • Reliable • Secure

## Modular AC UPS

5-40kW On-line double conversion compact UPS and battery configurations provide high efficiency power protection and maximizes valuable RU space. VRLA & Lithium battery options are available.



## Precision Cooling

Highly integrated precision cooling with factory matched condenser is sized and factory tested for guaranteed compatibility and high reliability.



## Rack Access Control

Flexible access control a wide range of options can be integrated including Key, Biometric, Code and card rack access provides enterprise level data center security for your IT assets.



## Hybrid Power Systems

Compact modular high efficiency AC and DC power systems can simply designed to support virtually any application, Lithium Ion batteries can be added to any system for increased service life.



## NOVEC 1230 Fire Suppression

Delta provides an optional NOVEC 1230 Fire Suppression System designed to protect a 19" rack mount server cabinet. Mounted in the top rack of the server cabinet, the system provides 24 hour monitoring for smoke utilizing twin optical smoke detectors operated by a control unit with a power supply and battery backup.

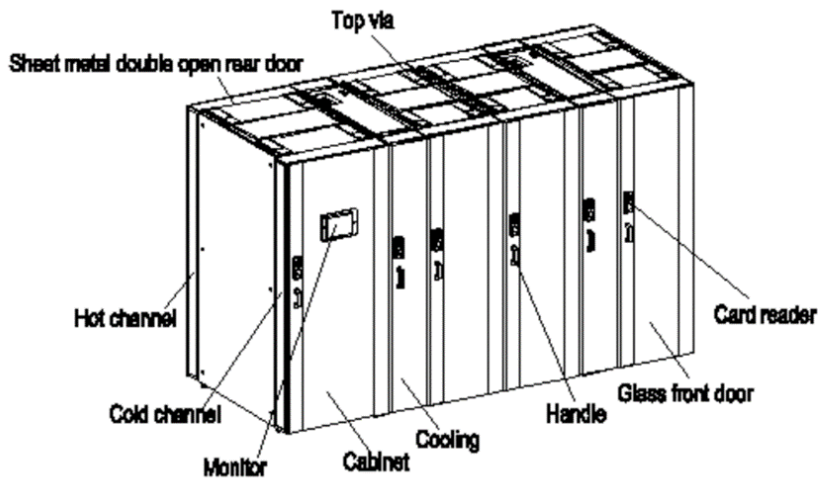
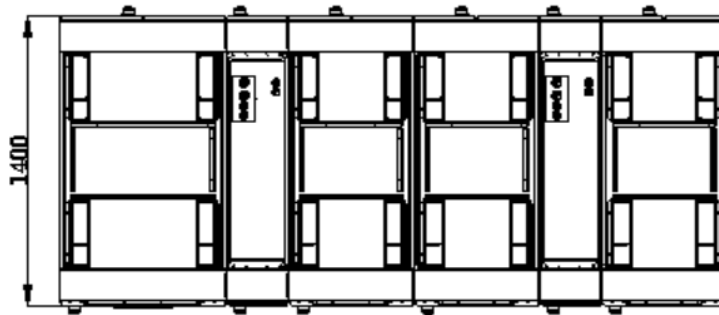
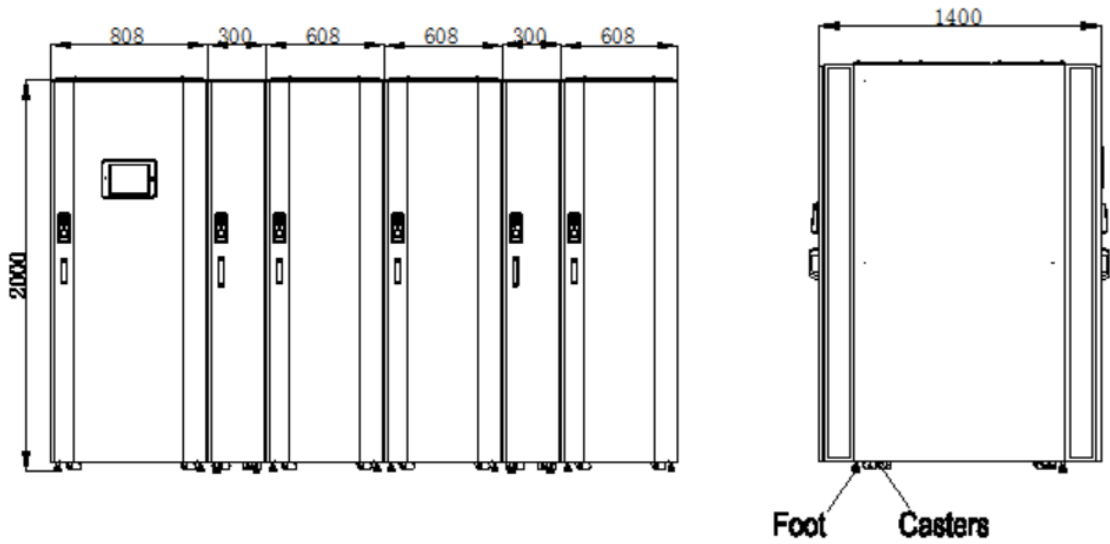


## Turnkey Installation

Our end to end installation commissioning and maintenance services increase the reliability of your installation, reduce installation time and provide you with peace of mind.

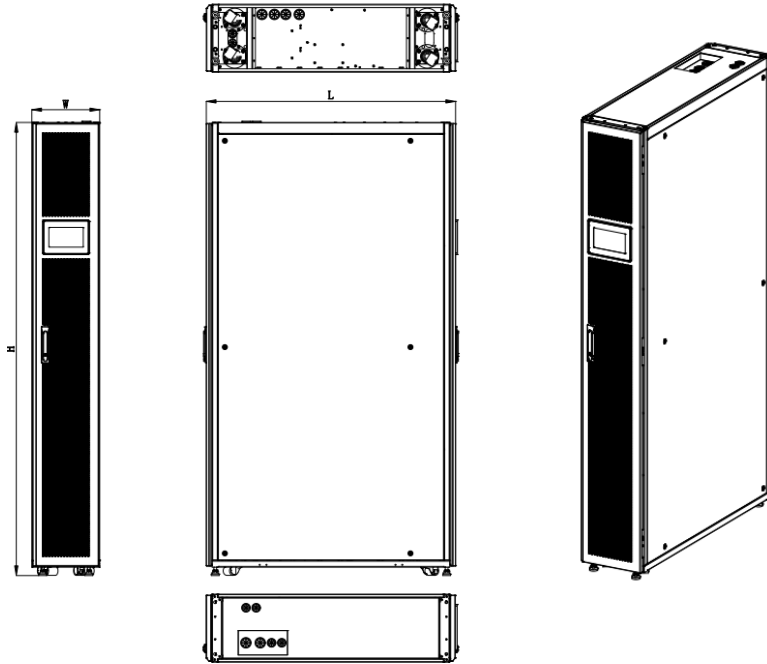


# Dimensions: 1400 Depth Model

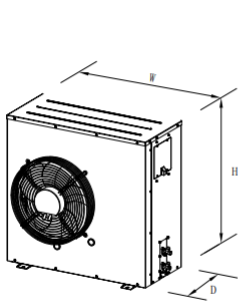




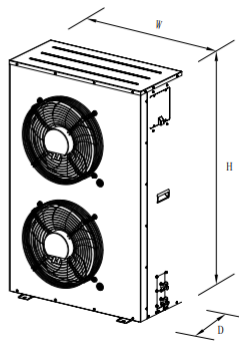
## Dimension: RowCool 5.6-40kW



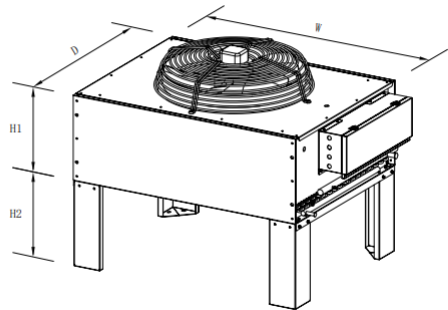
## Dimension: External Condensers



HSF08A  
HSF12A



HSF18A



HSF24A  
HSF32A  
HSF38A

## Specifications

RowCool Units						
Model	HC-05R	HC-07R	HC-12R	HC-17R	HC-20R	HC-25R
Total Cooling Capacity*	5.6	7.6	12.8	17.6	21.2	25.1
SHR-%	100	100	100	100	100	100
Air Volume – CFM	1177	1295	1413	2650	2896	2943
Power Input	230V/50Hz	230V/50Hz	400V/50Hz	400V/50Hz	400V/50Hz	400V/50Hz
Mounting type	Row	Row	Row	Row	Row	Row
Cooling Type	DX	DX	DX	DX	DX	DX
Height-mm	2000	2000	2000	2000	2000	2000
Depth-mm	1100	1100	1100	1100	1100	1100
Width-mm	300	300	300	300	300	300
Weight-kg	210	213	233	253	258	260
Reheat (Option)-kW	3	3	3	6	6	6
Humidity (Option)-kg/h	1.5	1.5	1.5	1.5	1.5	1.5
Outdoor Unit						
Model	HSF08A	HSF12A	HSF18A	HSF24A	HSF32A	HSF38A
Power Input	230V/50Hz	230V/50Hz	400V/50Hz	400V/50Hz	400V/50Hz	400V/50Hz
Height-mm	790	790	1240	689	689	695
Depth-mm	480	480	480	990	990	990
Width-mm	800	800	800	1384	1384	1384
Leg Height-mm	-	-	-	450	450	450
Weight-kg	28	40	67	105	110	120
*cooling capacity based on 37 °C/24%RH return air and 35°C outdoor temperature						

## | General Arrangements





#### **Delta Electronics (Thailand) PCL**

909 Moo 4, E.P.Z., Bangpoo Industrial Estate  
Phraksa, Muang, Samutprakarn 10280,  
THAILAND  
TEL: +66-2-709-2800  
[ups.thailand@deltaww.com](mailto:ups.thailand@deltaww.com)

#### **Delta Green Industrial (Thailand) Co., Ltd.**

111 Moo 9, Wellgrow Industrial Estate  
Bangwua, Bangpakong, Chachoengsao 24180,  
THAILAND  
TEL: +66-2-709-2800  
[ups.thailand@deltaww.com](mailto:ups.thailand@deltaww.com)

#### **Delta Energy Systems (Singapore) Pte Ltd.**

4 Kaki Bukit Ave 1, #05-04,  
SINGAPORE 417939  
TEL: +65-6747-5155  
[ups.singapore@deltaww.com](mailto:ups.singapore@deltaww.com)

#### **Delta Energy Systems Australia Pty Ltd.**

20-21/45 Normanby Road Notting Hill,  
VIC 3168, Australia  
TEL: +61-3-9543-3720  
[ups.australia@deltaww.com](mailto:ups.australia@deltaww.com)



More Information