

Delta InfraSuite Device Master

InfraSuite Device Master provides a rich set of capabilities that simplify and automate critical device monitoring. It allows users to observe the status of all devices, query event logs or history data, and assists users in taking appropriate action. With cost effective deployment, this software solution is scalable to match your business growth.

Benefits of InfraSuite Device Master

Free to Download

InfraSuite Device Master is free to download with 5 nodes by default for monitoring your devices. Various infrastructure facilities such as power and cooling in a data center can be monitored.

Real-Time Monitoring

Users can gather the latest status of critical facilities in a data center through the system screens of InfraSuite Device Master. InfraSuite Device Master also lets you view all of a site's device information, query history and events at the same time, even for multiple sites in different countries.

Easy to Deploy

The download file is ready on the Delta Software website. InfraSuite Device Master is easy to install on your server or PC, with software designed for quick installation and implementation.

Migration to InfraSuite Manager (DCIM)

If you are not only looking for device monitoring but also a complete DCIM solution, InfraSuite Device Master is the easiest way of migrating to InfraSuite Manager, which is Delta fully featured DCIM software solution.

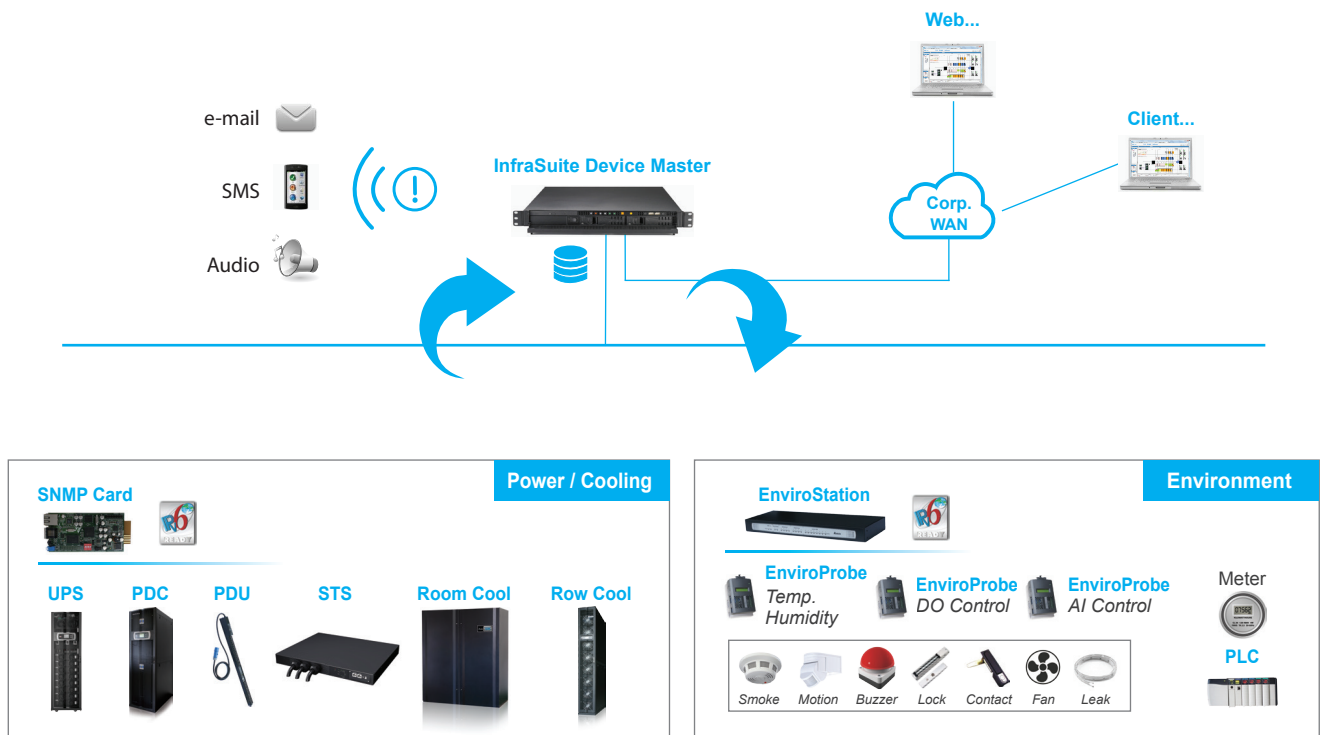


FIGURE 1. Delta InfraSuite Device Master Monitoring Application

Free Download
To download InfraSuite Device Master, please go to:
<http://www.deltapowersolutions.com/en/mcis/data-center-infra-suite-device-master.php>

Product Features

Navigational Graphics

Navigational graphics of the InfraSuite Device Master are customizable. Users can design a floor layout using the provided components.

Multiple Protocol Support

InfraSuite Device Master supports multiple device protocols, such as Modbus, SNMP and OPC.

Proactive Notification

Proactive notifications provide automated, personalized email, short messages, and audio to users.

User Account Management

Users can be classified into groups based on privilege levels. The job scope of each privilege level is defined by administrators. The jobs include the level of visible access to layout plans, device control and system operation.

Event Management

InfraSuite Device Master has categorized event levels with 16 levels to help users take appropriate action accordingly. Besides, events can be queried by time, type, level and devices. InfraSuite Device Master records the system, operator and device events in its database where the user can review the events' status.

Data Storage and Backup

InfraSuite Device Master stores all history events and data into its database. Users may use this data for analysis. In addition, the database can be backed up automatically base on user preference.



FIGURE 2. Navigational Graphics

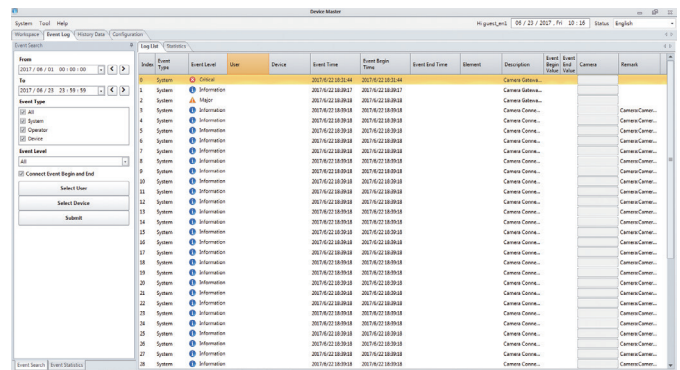


FIGURE 3. Event Log List

System Requirements

	InfraSuite Device Master (Server)	InfraSuite Device Master (Windows Application UI)	InfraSuite Device Master (Web Monitor UI)
Hardware	CPU: > 2GHz Memory: >= 4G Free HD Space: ≥ 50 G	CPU: > 2GHz Memory: ≥ 4G	CPU: > 2GHz Memory: ≥ 4G
Software	Support OS: Windows 7, 8, 10, Windows Server 2008, 2012, 2016	Supported OS: Windows 7, 8, 10, Windows Server 2008, 2012, 2016	Recommended Browser: Microsoft Internet Explorer v11, Google Chrome v30, Mozilla Firefox v23 and Safari v5.