



Automation for a Changing World

# Delta Extended Motion Controller DXMC Series





### Standard Type DXMC-S

Synchronous multi-axis motion control,  
built-in 16 DI & 16 DO terminals,  
EtherCAT bus, simple wiring



### Panel Type DXMC-P

Built-in 7" & 10" LED monitor for  
display and operation

## Delta Extended Motion Controller DXMC Series

The DXMC Series is an advanced synchronous multi-axis motion controller with max. 32 real axes and 64 virtual axes control. It provides tension control, rotary cut, flying shear and E-CAM function blocks with user-friendly program editing for a wide range of industry applications, including packaging machines, printing machines, winding machines and industrial robots. In addition, the DXMC Series features optional Multiprog PLC or Delta Motion Kernel to provide a flexible and customized motion control platform for machine upgrades and smart equipment.

To meet various user requirements, the DXMC Series includes **Standard Type DXMC-S** and **Panel Type DXMC-P**:

**Standard Type DXMC-S** supports various communication modes to connect the host controllers and field devices with high immediacy, speed, precision and flexibility:

- Ethernet: for connection with computers or host controllers
- EtherCAT: for communication with the Delta Servo Drive ASDA Series
- CANopen: offers expandable I/O modules
- Built-in 16 DI/16 DO terminals
- SSI encoder signal and 2 sets of differential encoder signals
- Built-in 1 RS-485 COM port

**Panel Type DXMC-P** features high brightness and contrast built-in LED monitor as operation interface. It integrates motion control functions and supports various communications:

- Ethernet: for connection with computers or host controllers
- EtherCAT: for high-speed communication with the Delta Servo Drive ASDA Series
- RS-232 / RS-422 / RS-485 COM ports: for connection with peripheral devices



## Table of Contents

---

- 1 Introduction
- 3 Features
- 5 Motion Control Function Blocks –  
Delta Motion Kernel
- 12 Delta Motion & Robot Software DMARS
- 17 Applications
- 18 Ordering Information
- 19 Product Information
- 21 Specifications
- 23 Dimensions
- 26 Product Information- ASDA-A3 Series  
Servo Drives
- 30 Product Information- ECM-A3 Series  
Servo Motors

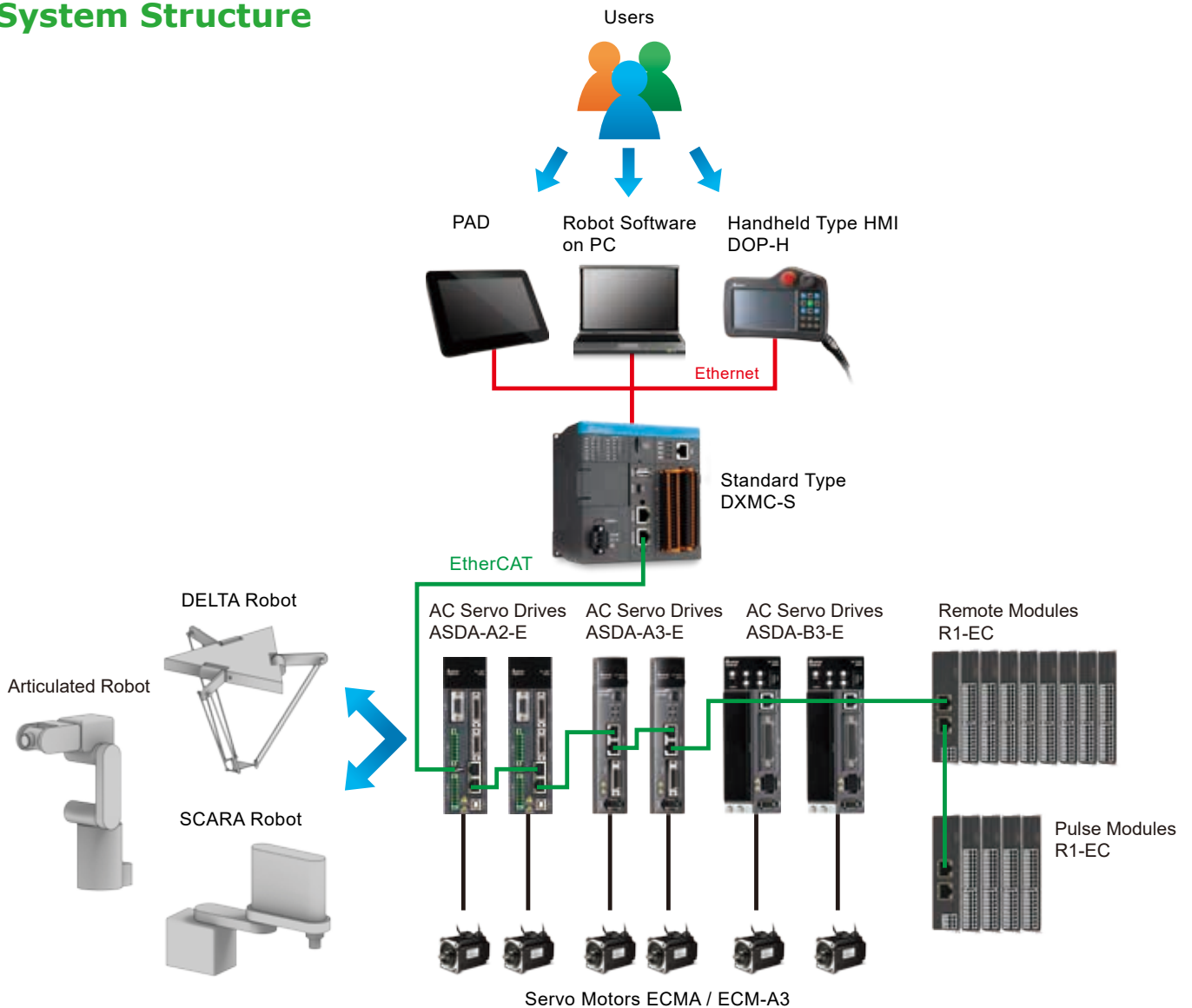
# Standard Type DXMC-S

## Features

- Max. 32 servo axes control (execution cycle 1 ms)
- Supports EtherCAT<sup>®</sup>, Modbus TCP and user-defined protocol
- Built-in 16 DI/16 DO terminals and RS-485 serial port
- Supports A / B / Z and SSI encoder signal input
- Various robot modules to control multiple robots simultaneously
- Function blocks available: tension control, rotary cut, flying shear, E-CAM
- IEC-61131-3 compliant PLC programming and advanced robot languages



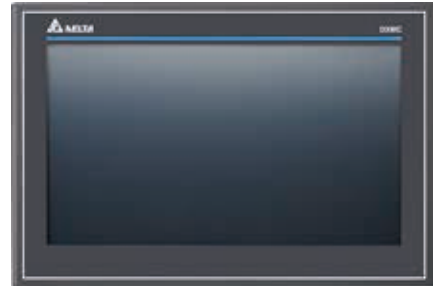
## System Structure



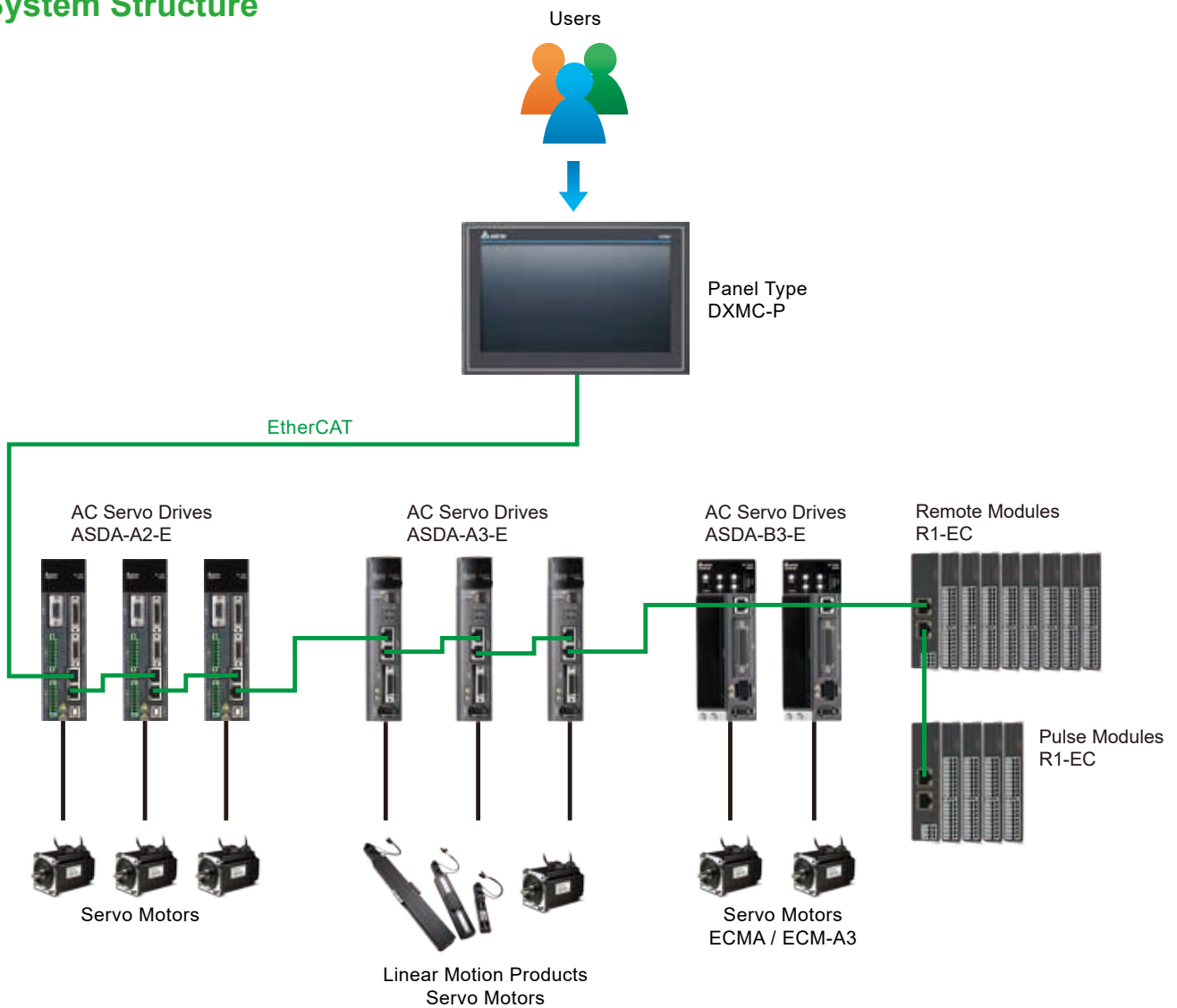
# Panel Type DXMC-P

## Features

- Motion controller integrated with HMI
- Max. 8 servo axes control (execution cycle: 2 ms)
- Supports EtherCAT, Modbus TCP, and user-defined protocol
- Built in RS-232 / RS-422 / RS-485 COM ports
- IEC-61131-3 compliant PLC programming and advanced robot languages



## System Structure



# Motion Control Function Blocks – Delta Motion Kernel

## E-CAM

### Multiple Engagement Timing and Shearing Mode Settings

- CAM function and shearing action start simultaneously to ensure the phase is not offset due to position deviation

### Offset & Scale Setting

- Sets up the offset value and scale ratio between master axis and slave axis flexibly

### Master / Slave Axis Relative & Absolute Mode Setting

- Sets up the targeted master / slave axis engaging position based different motion applications
  - **Absolute Master / Relative Slave**  
The starting speed of slave axis is based on the absolute position of master axis
  - **Relative Master / Absolute Slave**  
Slave axis starts with the fixed position in reference to the master axis, such as flying shear mode
  - **Relative Master / Relative Slave**  
For applications concerning master / slave speed only
  - **Absolute Master / Relative Slave**  
For applications concerning master / slave position, such as rotary cut packaging machines

### On-line CAM Table Function Block Adjustment

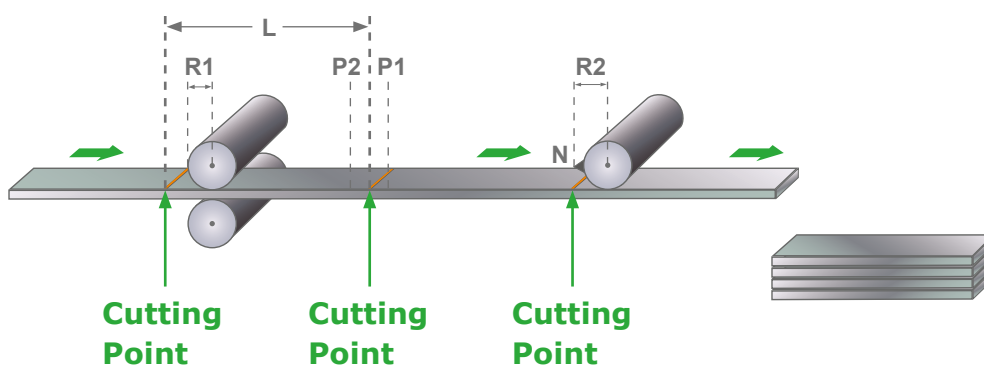
- Provides adding, deleting, and adjusting functions
- Adjusts switch timing via function blocks
- Reads and writes in CAM table function blocks online



## Rotary Cut and Flying Shear

### Rotary Cut

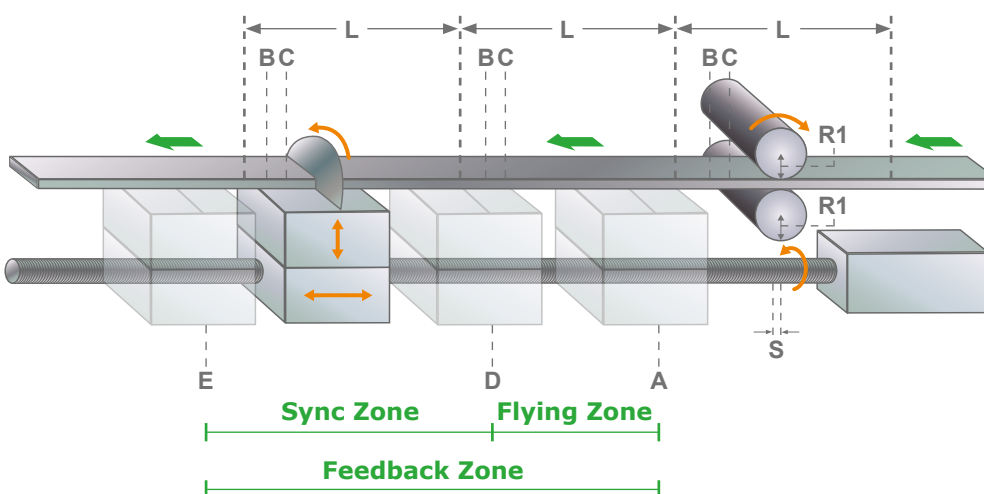
- Sets up cutting length, tool quantity, sync. zone data with application parameters to build up rotary cut CAM table
- Feeding axis and rotary axis rotate with the same speed ratio in sync. zone (same speed in general)
- Users are able to adjust rotary speed in sync. zone online to fix the deviation between theory and reality, no need to build up a new table



ECAM_GenRotaryCutTable_1	
ECAM_GenRotaryCutTable_1	
Execute	Done
TableID	Busy
RotaryAxisRadius	Error
RotaryAxisKnifeNum	ErrorID
CutLength	ID
SyncStartPos	
SyncStopPos	
Overwrite	

### Flying Shear

- Suitable for motion control of cutting or filling machines
- Sets up cutting length, wait position, flying zone, sync. zone, and feedback zone data with application parameters to build up flying shear CAM table
- Master axis and slave axis rotate with the same speed ratio in sync. zone (same speed in general) and cut the workpiece in sync. zone

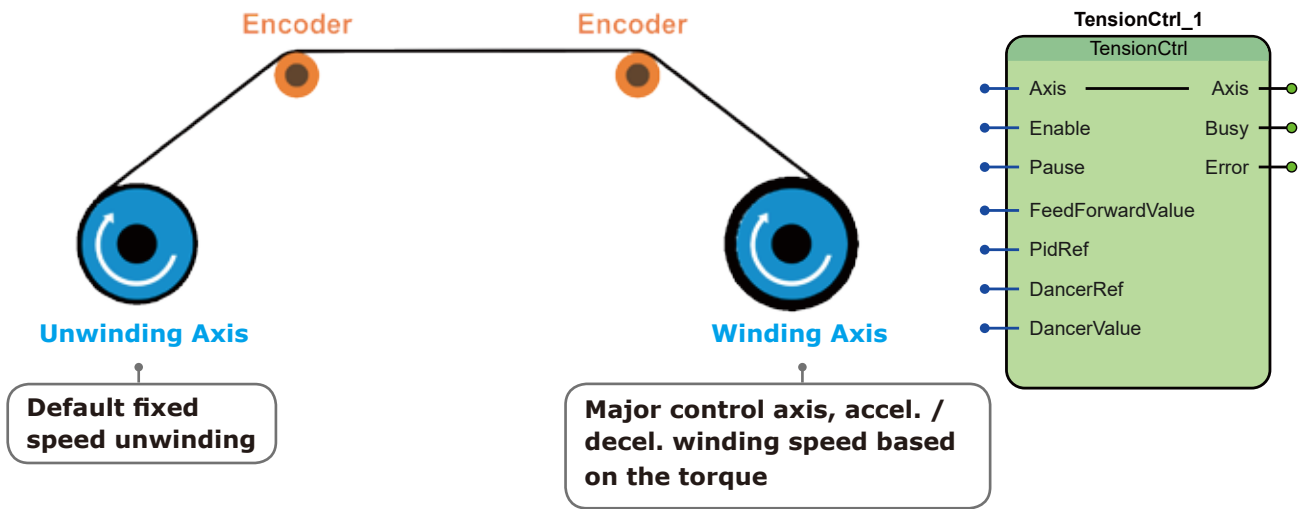


ECAM_GenRotaryCutTable_1	
ECAM_GenRotaryCutTable_1	
Execute	Done
TableID	Busy
CutLength	Error
MasterStartPosition	ErrorID
MasterSyncPosition	ID
SlaveSyncPosition	
SlaveEndPosition	
SlaveWaitPosition	
Overwrite	

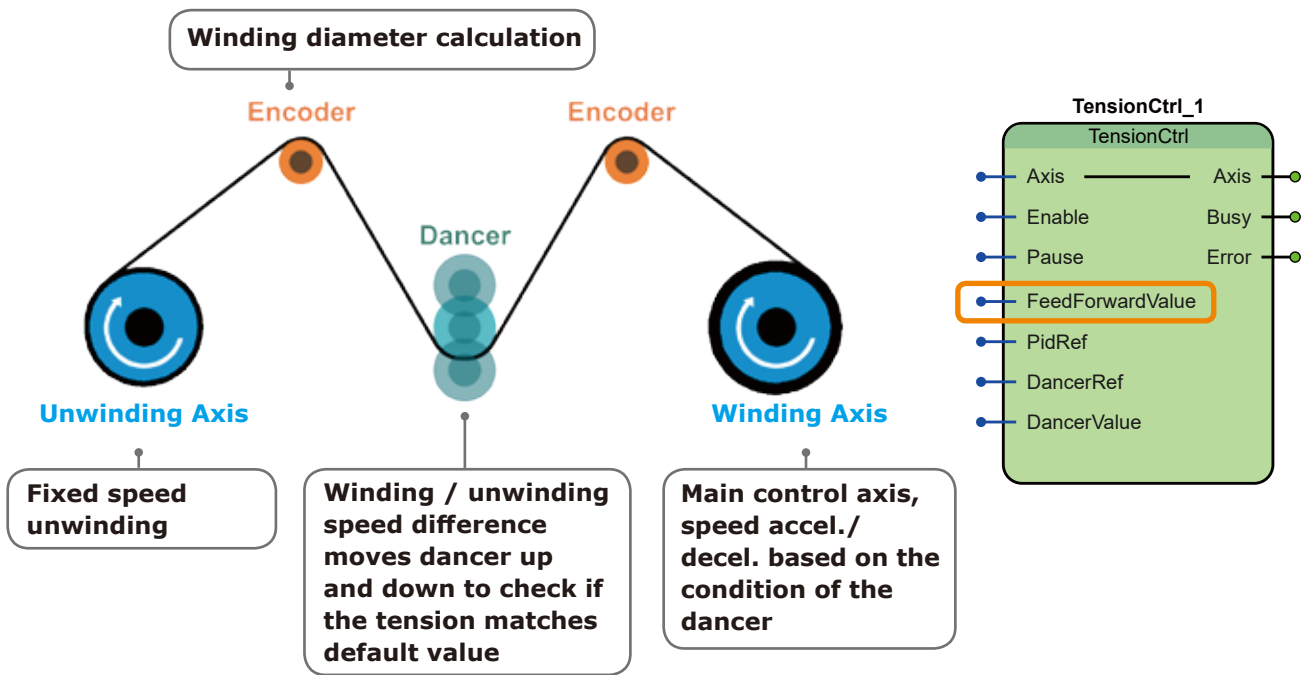
## Tension Control

- Speed Mode control for quicker response
- Dancer Mode: feedforward input to accelerate response

### Without Dance Mode



### With Dance Mode





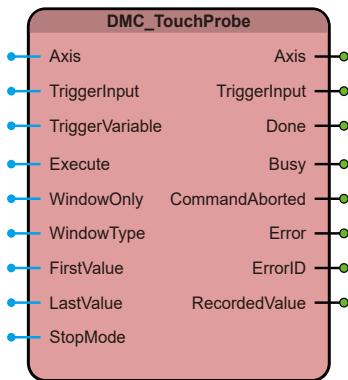
# Distributed Control – Touch Probe

## Features

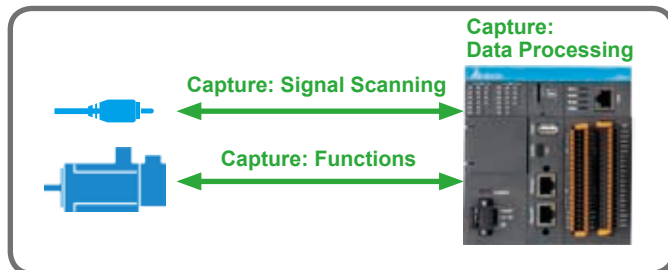
- Triggers events with axis number and Trigger ID
- Stops triggering events with axis number and Trigger ID
- 6 Probes for one axis (One axis captures 6 types of data synchronously)
  - Drive Mode : 2 Probes (depends on the servo drive models)
  - Controller Mode : 4 Probes
- Drive Mode and Controller Mode available:
  - Drive Mode : High-speed capture with the Capture function of servo drives
  - Controller Mode : Captures by the controller, supports high-speed axis and low-speed multiple data (speed, acceleration) capture

## Benefits

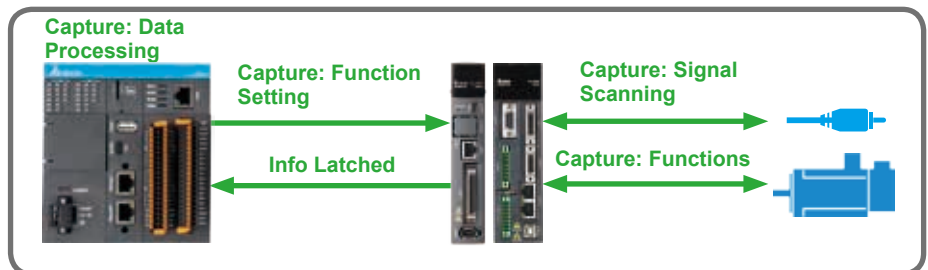
- Reduces control operation loading
- Capture accuracy is not affected by the fieldbus communication cycle
- Two modes in one function block



### Controller Mode



### Drive Mode



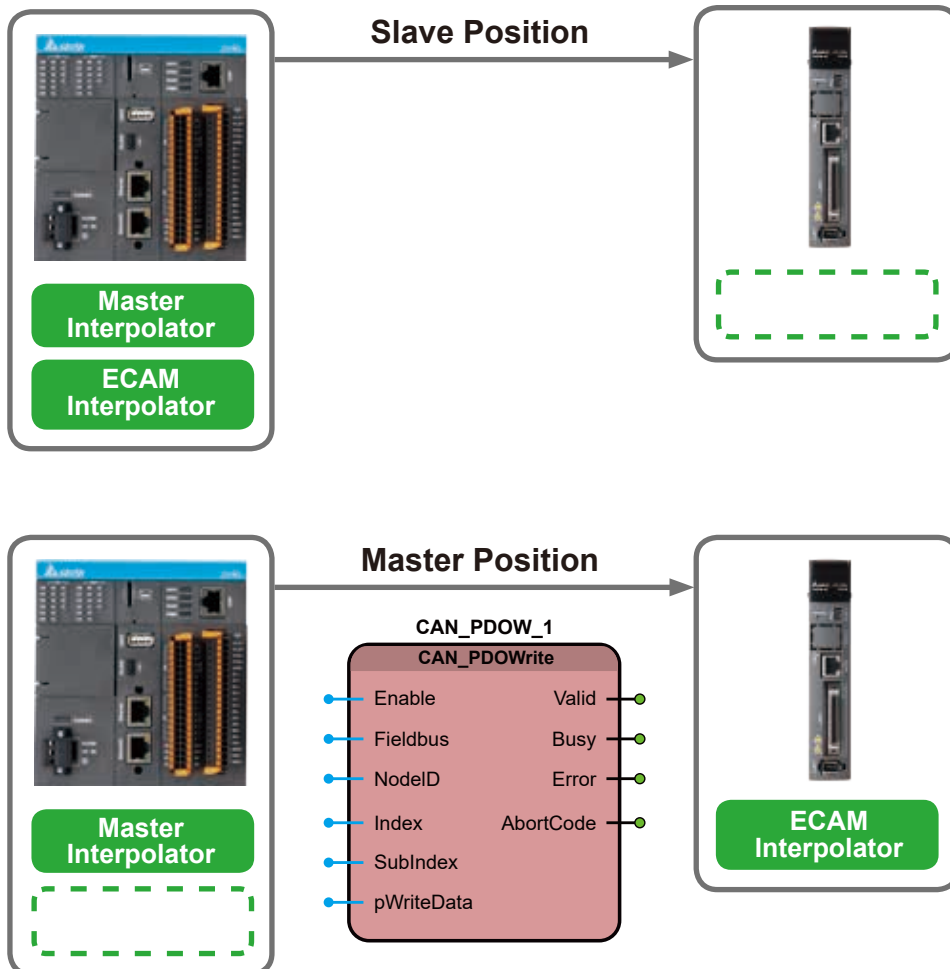
## Distributed Control - E-CAM

### Features

- Transmits master axis position data via PDO
- E-CAM function of the servo drives enhances control efficiency

### Benefits

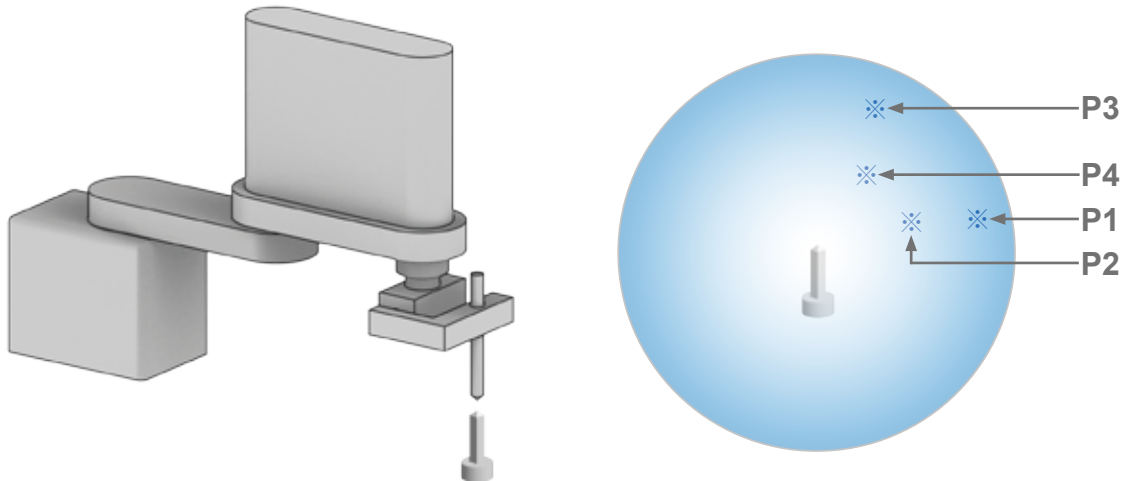
- Reduces control operation loading
- Compact motion controller for multi-axis E-CAM algorithm



## Robotic Function Library

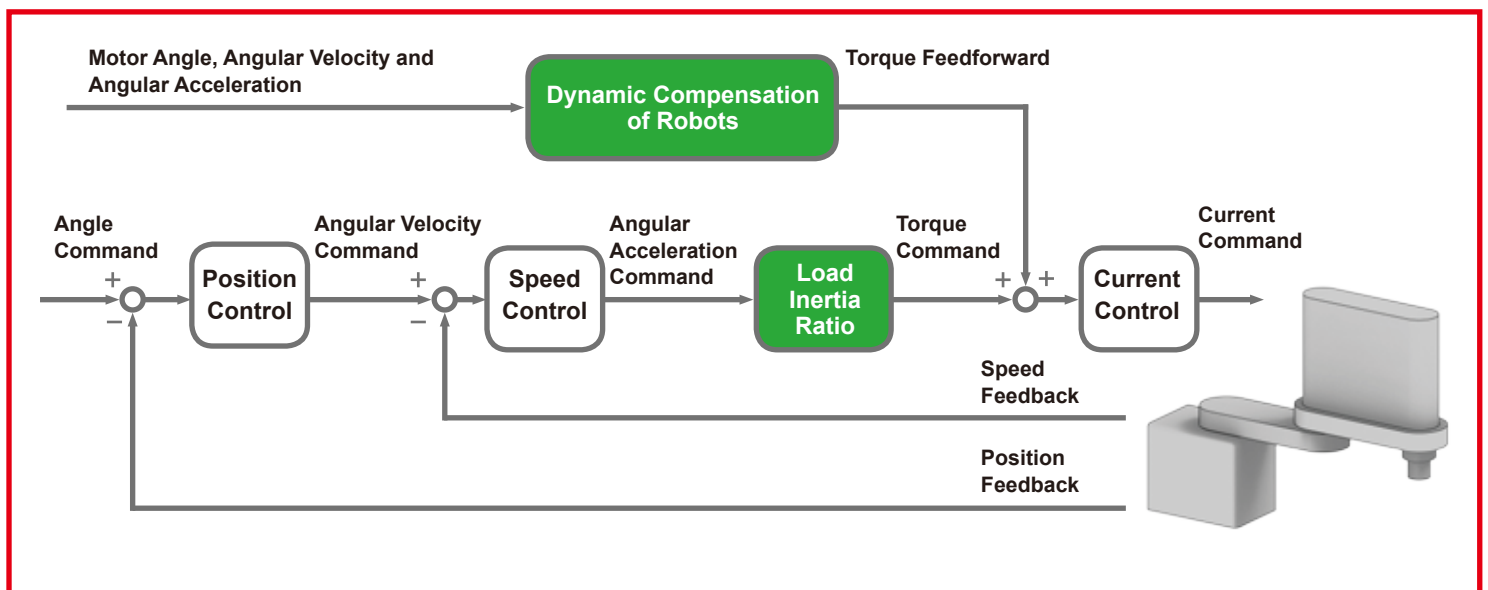
### Calibration

- Tool, arm length, quick calibration
- 5 axes / 6 axes calibration accuracy: 1mm



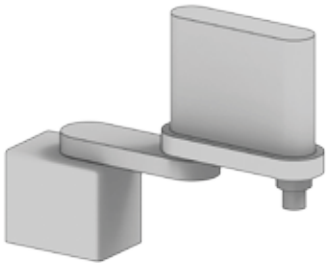
### Dynamic Compensation

- Real-time load inertia ratio optimizes operation smoothness of robots
- Real-time dynamic compensation improves transient response

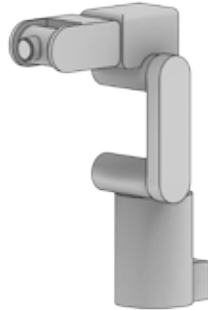


## Various Models Supported

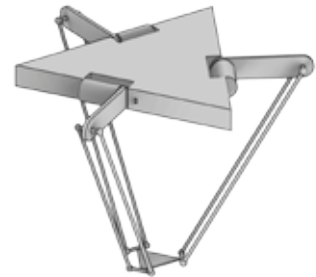
- More than 35 types of robot modules
- Supports standard and non-standard robots



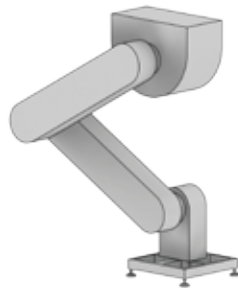
**SCARA Robot**



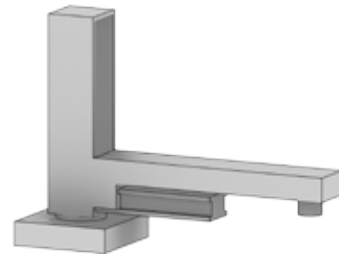
**Articulated Robot**



**DELTA Robot**



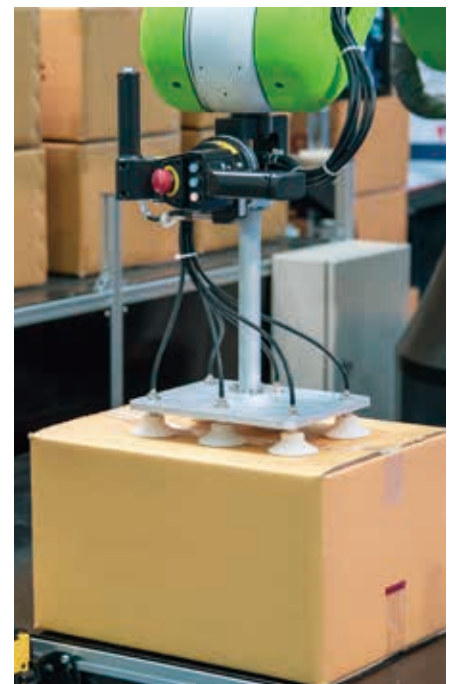
**Top-mounted Robot**



**Cylindrical Coordinates Robot**

## Applicable Industries

- Welding, food pick-and-place, palleting



# Delta Motion and Robot Software DMARS



## Features

- Supports: DXMC-S / DXMC-P / 2<sup>nd</sup> HMC
- PLC editing program: Multiprog (IEC-61131-3 compliant)
- Standard PLCopen motion function block – Part 1, 2, 4(Robot)
- Supports Delta robotic programming language
- Integrated software project management (Multiprog / DOPSoft / EzASD)
- Automated PLC variables adding and HMI variable tags exchange
- DOPSoft uses PLC variable names to edit the interface
- Real-time oscilloscope: Max. 16 channels, 8 / 16 kHz frequency, LREAL variable supported
- Oscilloscope monitors axis variable, axis group variable, address, PLC memory, PLC variable, CANopen OD
- User-friendly ECAM editing interface

## Project Management

- Supports DXMC-S / DXMC-P / 2<sup>nd</sup> HMC
- Multi-product project management
- Manages Multiprog / DOPSoft / (EzASD) software projects simultaneously

**Multiprog PLCProject**

**DOPSoft Project**

**EzASD Project**

## Multiprog / PLCopen

- PLC programming: Multiprog (Compliant with IEC-61131-3)
- Standard PLCopen motion function blocks
- PLCopen Part-4 Robot motion function supported

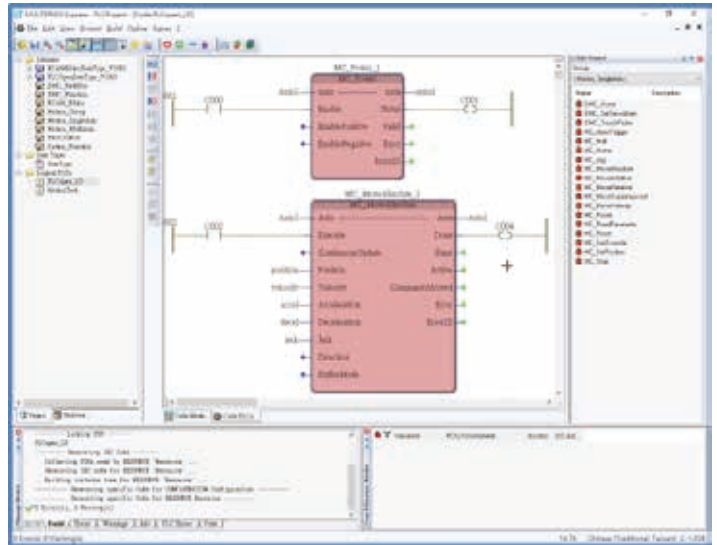
### ST Editor

```

1  .75912018+003  index := index + LREAL#0.001;
2  .1362855E+001  W000 := S18(index);
3  .3092504E+001  W002 := S18(index - LREAL#1.57);
4  .9102176E+001  W001 := COS(index);
5  .0567460E+001  W003 := COS(index + LREAL#1.57) * LREAL#2.0;
6
7
8  FALSE IF bTrue THEN
9  -491  INT01 := INT01 + INT#1;
10 ELSE
11 -401  INT01 := INT01 - INT#1;
12 END_IF;
13
14 -401  IF THEN
15 THEN bTrue := FALSE;
16 END_IF;
17 IF
18 THEN INT01 < -INT#500
19 THEN (**[if ignored value of EXPRESSION = TRUE**)
20 bTrue := TRUE;
21 END_IF;
22
23
24 -291  INT02 := INT01 + INT#200;
25 -91  INT03 := INT02 + INT#200;
26 100  INT04 := INT03 + INT#200;
27 300  INT05 := INT04 + INT#200;
28 500  INT06 := INT05 + INT#200;
29 700  INT07 := INT06 + INT#200;
30 900  INT08 := INT07 + INT#200;
31 1100 INT09 := INT08 + INT#200;
32 1300 INT10 := INT09 + INT#200;
33 1500 INT11 := INT10 + INT#200;
34 1700 INT12 := INT11 + INT#200;
35 1900 INT13 := INT12 + INT#200;
36 2100 INT14 := INT13 + INT#200;
37 2300 INT15 := INT14 + INT#200;
38 INT16 := INT15 + INT#200;
39

```

### Ladder Diagram / Function Block Editor



## EtherCAT

- Complete EtherCAT setting tool
- EtherCAT debug tool

Set Slave PDO OD Code

Step1. Select Module And Channel

Module Name: Other VendorID: 0x000010D0  
 ProductCode: 0x00006010 RevisionNo: 0x00030000 Sync Enable

Recommendation PDO Default PDO Load Information

Step2. Setup PDO OD Code Channel Enable

Master TX Master Rx 0x1600, Disable, NoFixed Enable Disable

Index	SubIndex	BitSize	Index	SubIndex	BitSize
0x2001	0x0	0x10	0x607A	0x0	0x20
0x2002	0x0	0x10	0x60FF	0x0	0x20
0x2003	0x0	0x10	0x6040	0x0	0x10
0x2004	0x0	0x20	0x6071	0x0	0x10
0x2005	0x0	0x20	0x6060	0x0	0x8
0x2006	0x0	0x20			
0x2007	0x0	0x20			

Black Color: Normal Red Color: Recommendation Blue Color: Requirement

Step3. Finish Setting

LRW Enable Save Dat File Save ESIC File

Project\_DKMC\_0\_K

EtherCAT Master

Physical ID: 1 ID Type: 1 Tx

Index	Sub-index	Data Size	Data	Send	Abort Code
0x2300	0x0	0x4	0x0	Send	0x0
0x0	0x0	0x0	0x0	Send	0x0
0x0	0x0	0x0	0x0	Send	0x0

SDO Read

Index	Sub-index	Data Size	Read Data	Read	Abort Code

Project\_DKMC\_0\_K

EtherCAT Master

Cycle Time: 1ms

通信状態監視

物理ID	単位時間	平均物理ID	物理ID	DC Time
0	0	0	0	50641

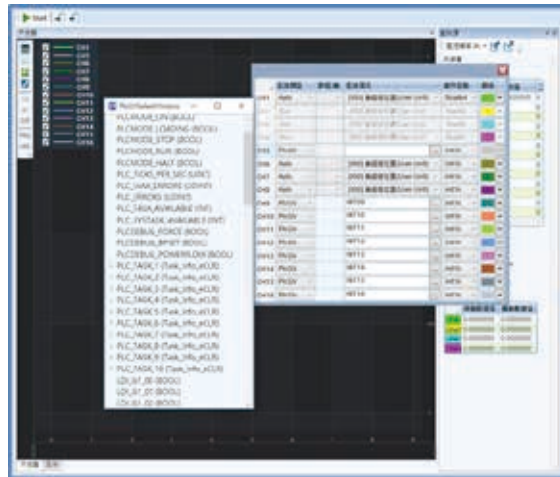
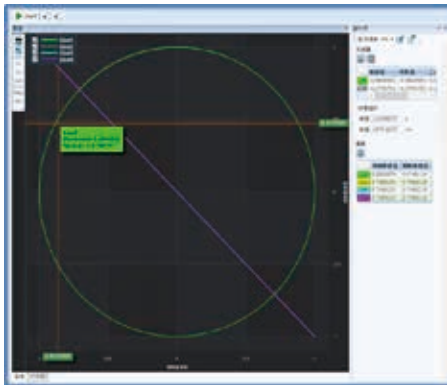
通信監視

物理ID	Func(1)	Func(2)	Func(3)	Func(4)	物理ID	物理ID
0	0	0	0	0	0	0
1	0	0	0	0	0	0
2	0	0	0	0	0	0
3	0	0	0	0	0	0

## DMARS Oscilloscope

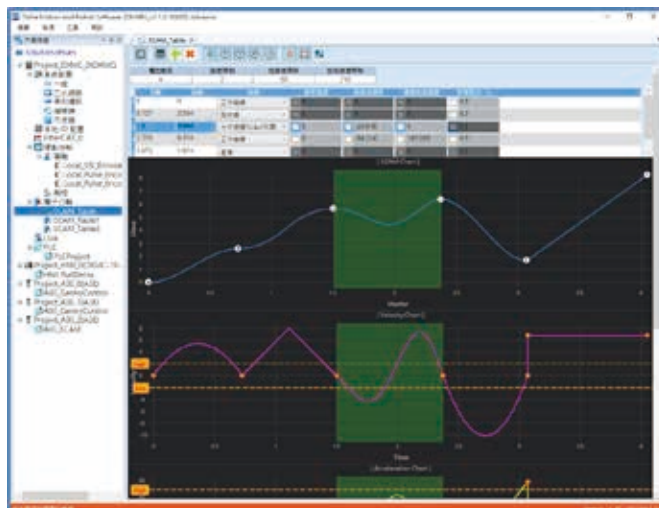
- Max. 16 channels
- Frequency: 8/16 kHz
- LREAL variable supported
- Oscilloscope monitoring: axis variable / axis group variable / address / PLC memory / PLC variable

### XYChart



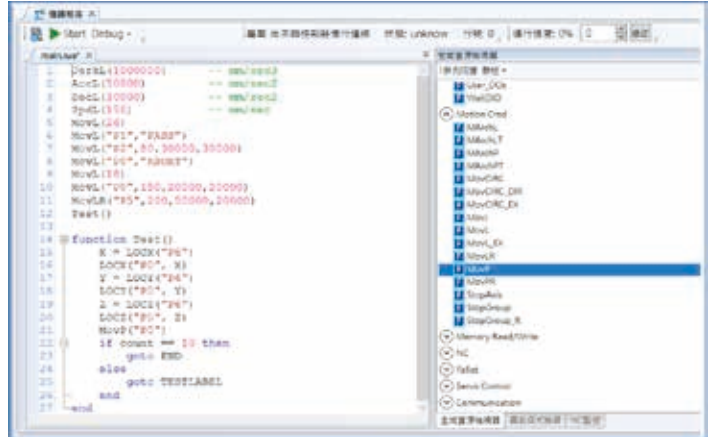
## ECAM Editor

- Supports linear, parabolic, simple harmonic, cubic / quintic / septic curves
- The curve of each segment between key point is variable
- Drags the key point of the curve directly
- Connects the speed, acceleration, and jerk continuously to maintain smoothness
- Symmetric point function to micro-adjust the curve
- User-defined speed, acceleration, and jerk
- Max. and min. limit of curve notification



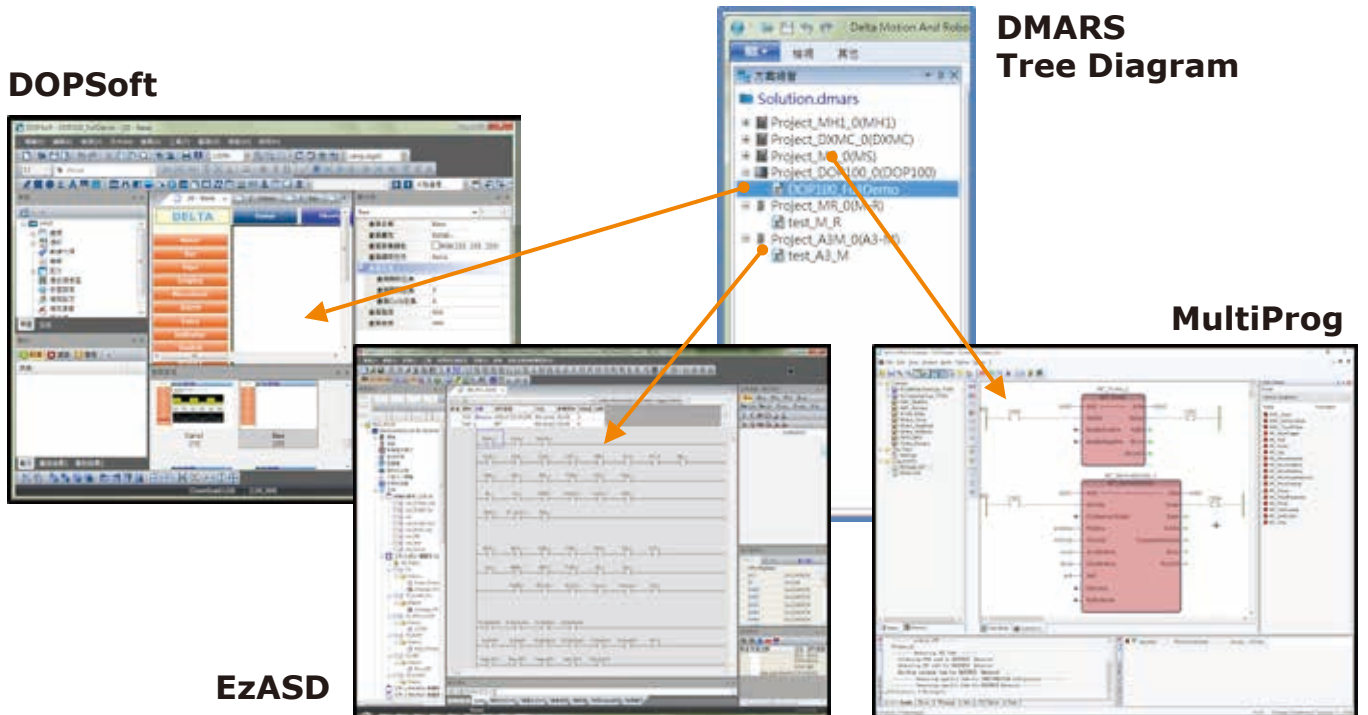
## Delta Robotic Programming Language

- Lua based
- Easy-to-use interpreted language
- No variable declaration needed
- Flexible function to input/output variable quantities
- Strong table function for digit and string index
- Multi-task supported
- Garbage collection (GC) supported
- C/C++ expensible



## Software Integrated

- Integrated software project management (MultiProg / DOPSoft / EzASD)







# Applications

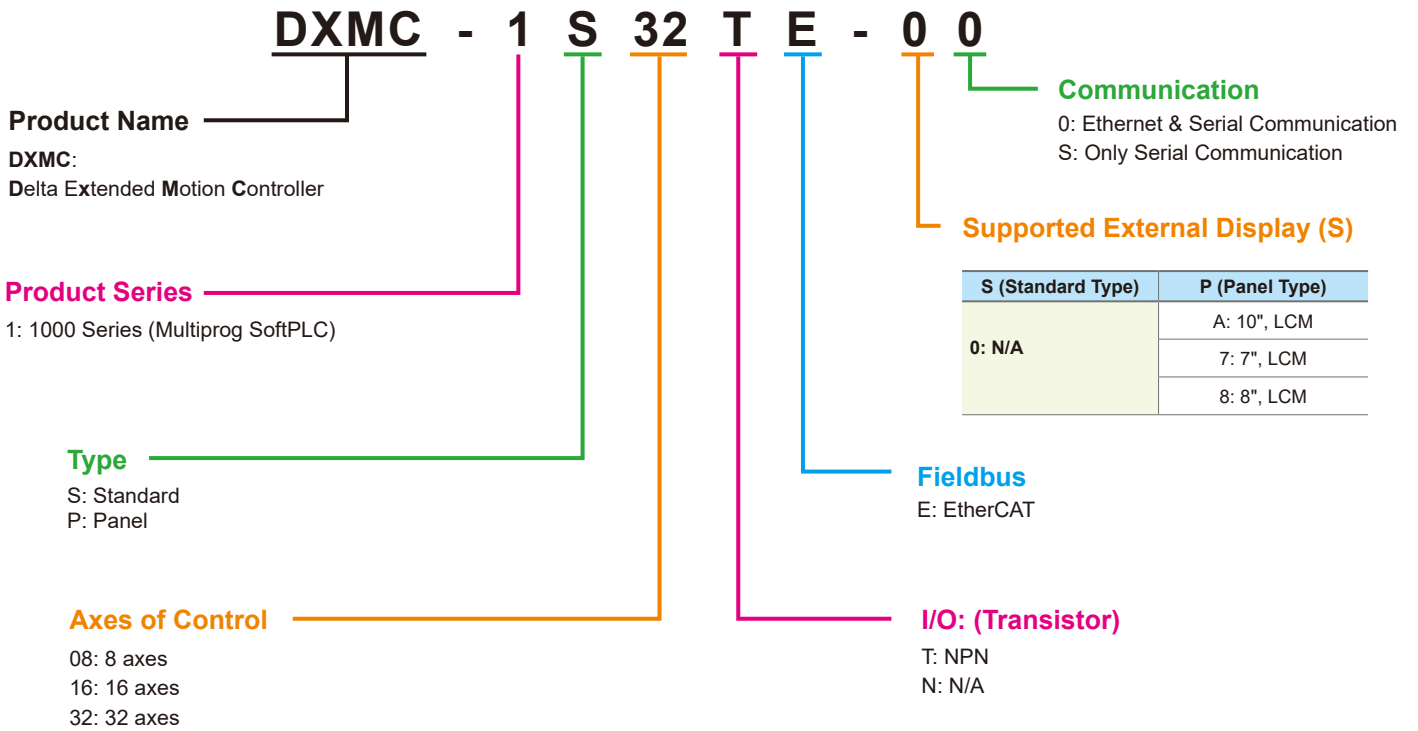
- Packaging machines, winding machines, printing machines



# Ordering Information

## Model Name Explanation

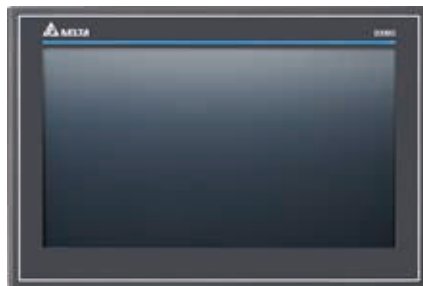
### Delta Extended Motion Controller DXMC Series



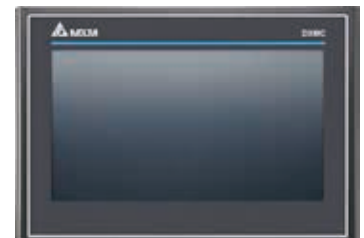
DXMC-1S32TE-00  
 DXMC-1S16TE-00



DXMC-1P08NE-A0



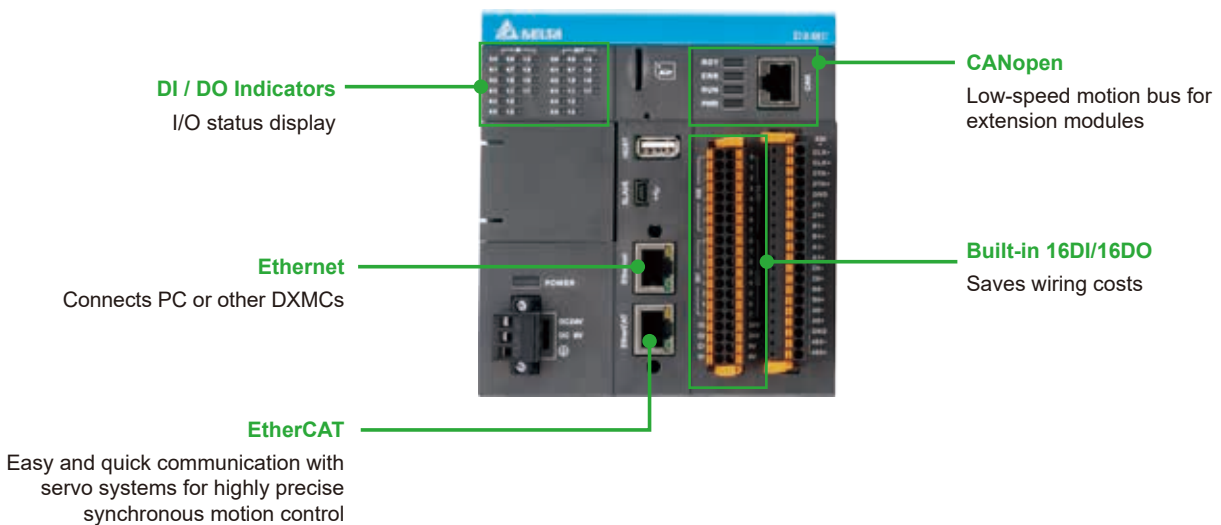
DXMC-1P08NE-7S



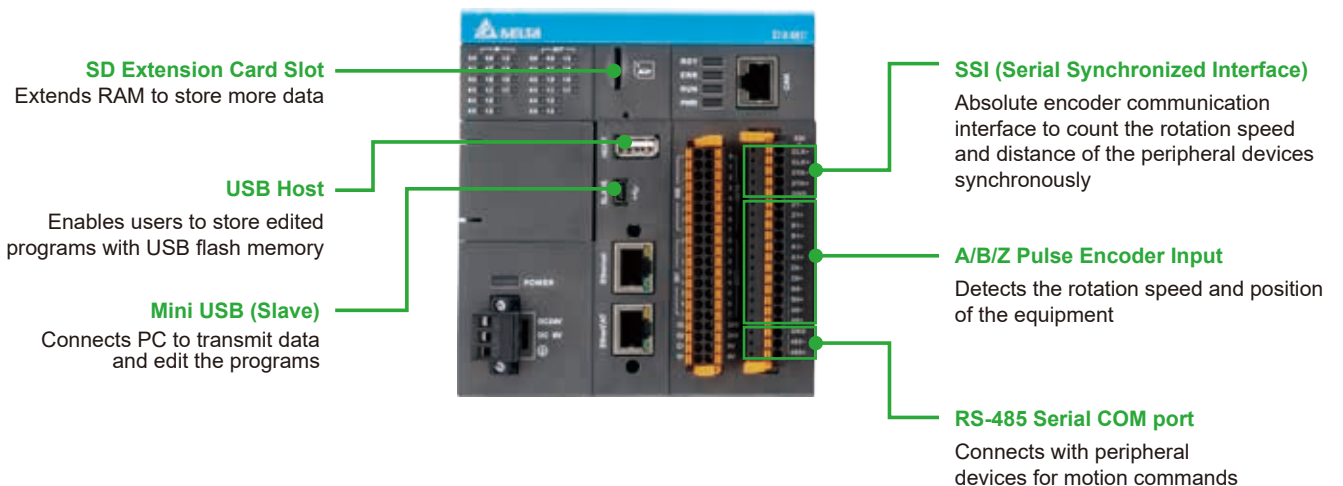
# Product Information

## Standard Type DXMC-S

- Max. 32 axes control, execution cycle 1 ms
- EtherCAT bus: for communication with servo drives (high speed)
- CANopen bus: for communication with I/O modules or peripheral devices (low speed)
- EthernetIP interface: for communication with host controllers or multiple DXMC-Ss
- Built-in 16 DI/DO (All 16 DIs are high speed)



- Built-in two channels of encoder pulse train input: A/B/Z ± differential signal
- Built-in one channel of communication type encoder input: SSI
- Built-in SD extension card slot
- Built-in USB interface (mini USB and USB Host)
- Built-in RS-485 communication port

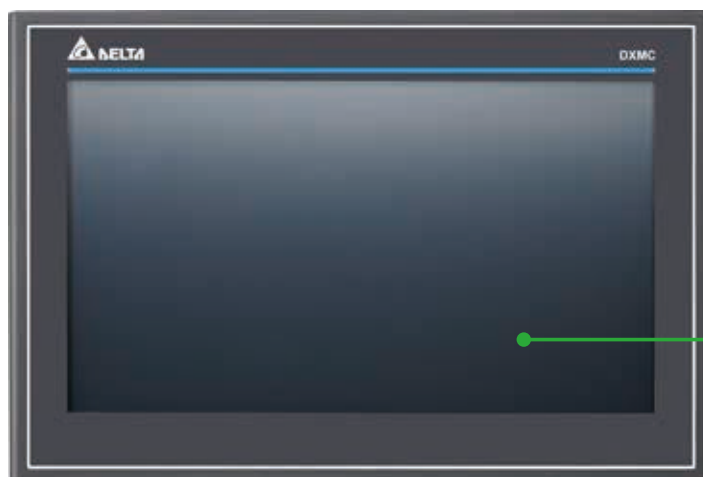


# Product Information

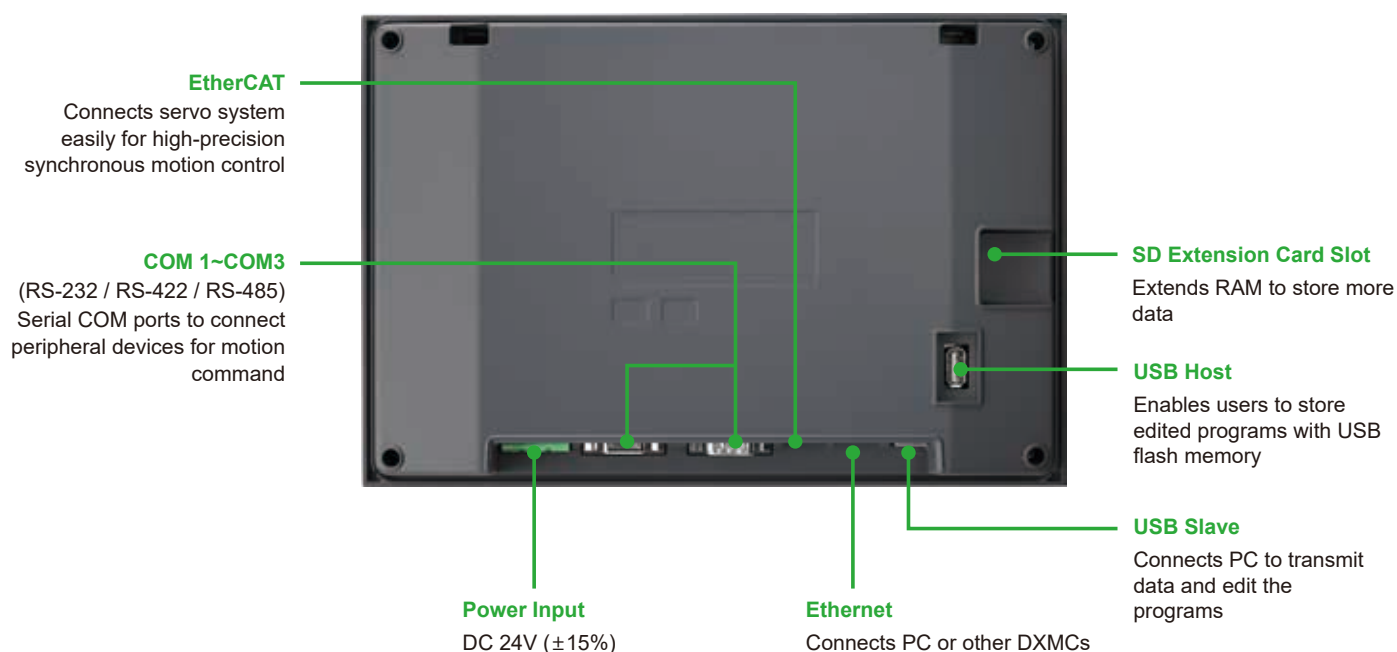
## Panel Type DXMC-P

- 7" / 10" 65,536 colors TFT LCD, 1,024 x 600 pixels
- EtherCAT bus: for communication with servo drives (high speed)
- Max. 8 servo axes control, execution cycle 2ms
- Ethernet/IP interface: for communication with host controllers or multiple DXMCs
- Built-in SD extension card slot
- Built-in USB interface (mini USB and USB host)
- Built-in RS-232 / RS-422 / RS-485 COM ports

\* 10" model



**Display**  
Vivid touch panel



**EtherCAT**

Connects servo system easily for high-precision synchronous motion control

**COM 1~COM3**

(RS-232 / RS-422 / RS-485) Serial COM ports to connect peripheral devices for motion command

**Power Input**  
DC 24V (±15%)

**Ethernet**  
Connects PC or other DXMCs


**SD Extension Card Slot**  
Extends RAM to store more data

**USB Host**  
Enables users to store edited programs with USB flash memory

**USB Slave**  
Connects PC to transmit data and edit the programs

# Specifications

Model		DXMC-1S32TE-00	DXMC-1P08NE-A0	DXMC-1P08NE-7S	
Processor	CPU	ARM Cortex-A17(1.8G Hz) Quad Core	ARM Cortex-A8 (800 MHz)	ARM Cortex-A8 (800MHz)	
Monitor	Display Type	N/A	10.1" TFT LCD	7" TFT LCD	
	Colors		65,536	65,536	
	Resolution (pixels)		1,024*600	800*480	
	Backlight		LED	LED	
	Backlight Luminance (cd/m2)		450	450	
	Backlight Life (Hr)		30,000	30,000	
Input / Output	Standard I/O	16 DI / 16 DO	Remote I/O	Remote I/O	
	Transistor	NPN			
Encoder Input	Encoder	A0± / B0± / Z0±; A1± / B1± / Z1± SSI			
Hardware Expansion	Max. expandible module	4	Remote I/O	Remote I/O	
	DI / DO Module	16 IN / 16 OUT			
	AD / DA Module	4 AD / 4 DA			
Storage	USB Host	USB 2.0 × 1	USD 2.0 x 1	USD 2.0 x 1	
	SD	SD Card slot × 1	SD Card slot × 1	N/A	
Power	Input Voltage	24V <sub>DC</sub> , ± 10 %			
	Rated Output	10 W	11 W	8.4 W	
	Max. Curr. Consumption	500 mA	460 mA	450 mA	
Memory Backup Battery		3V Lithium Battery CR2032 x 1			
Dimensions (W) * (H) * (D) mm / Weight		120 x 130 x 108 / 780g	270 x 180.9 x 47.75 / 1,100g	196 x 136 x 39 / 560g	
Cooling Method		Natural			
Axes of Control		Max. 32 Axes	Max. 8 Axes		
Processing Speed	IL (LD)	419ns/1000	2000ns/1000		
PLC Programs	Program Capacity	32MB	8MB		
	Variable Capacity	32M (Retain : 128KB)	8M (Retain : 32KB)		
PLC Tasks	Sync. Motion Task Quantity (High-speed task included)	1			
	Cycle Task Quantity (Low-speed task included)	9	9 (Max.)	9	9 (Max.)
	Action Task Quantity	5		5	
	Background Task Quantity	1		1	
	Sync. Motion Execution Cycle (High-speed task included)	125 μS ~ 1 mS		Only 2 mS	
	Periodic Task Execution Cycle (Low-speed task included)	1 mS ~		2 mS ~	
Robot Language (LUA)	Program Capacity	8 MB	2 MB		
	Task Quantity	4			

Model		DXMC-1S32TE-00	DXMC-1P08NE-A0	DXMC-1P08NE-7S
Motion Control	Supports PLCopen	Part 1 & 2 & 4		
	Max. Axes of Control (Real + Virtual)	96 (32 +64)	16 (8 +8)	
	Max. Real Axes of Control	32	8	
	Max. Group	48	4	
	Max. Axes per Group	12	8	
	Max. Robot	4	2	
	Min. Motion Control Cycle	125 μS (8 Axis)	2 mS (8 Axis)	
CAM	Max. CAM	256	16	
	Max. Point per CAM	65,535		
	Total CAM Points	1,048,560	65,535	
Communication	Network Interface	Ethernet x 1		
	High-speed Bus	EtherCAT x 1		
	Low-speed Bus	CANopen x 1	N/A	
	Serial Port	RS-485	RS-232/RS-422/RS-485	
	USB Slave	1 (connects to PC)		
Environment	Ambient Temperature	0 ~ 50° C		
	Storage Temperature	- 25° C ~ 70° C	- 20° C ~ 60° C	
	Humidity	10 ~ 90%RH (Non-condensing)		
	Vibration	IEC61131-2 compliant 5 Hz~8.3 Hz 3.5 mm, 8.3 Hz ~ 150 Hz 1G		
	Shock	IEC 60068-2-27 compliant 15G peak for 11ms duration	IEC 60068-2-27 compliant 15G peak for 11ms duration, X, Y, Z, directions for 6 times	
	Protection Rating	IP20	IP65 / NEMA4 / UL Type 4X (Indoor use only)	
	Certification			

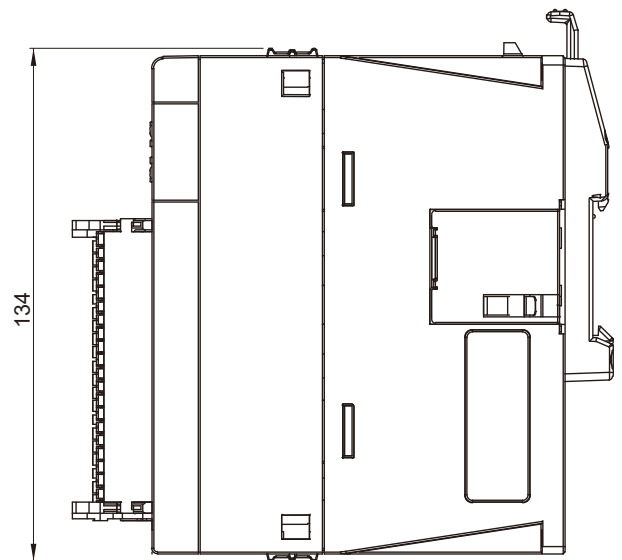
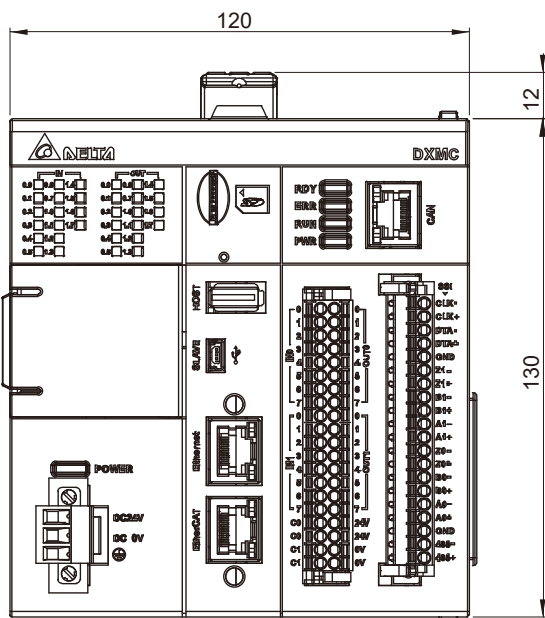
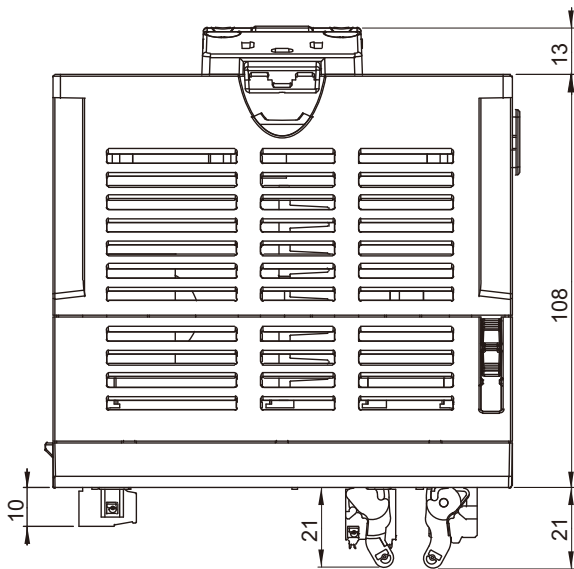


# Dimensions

**DXMC-1S16TE-00**

**DXMC-1S32TE-00**

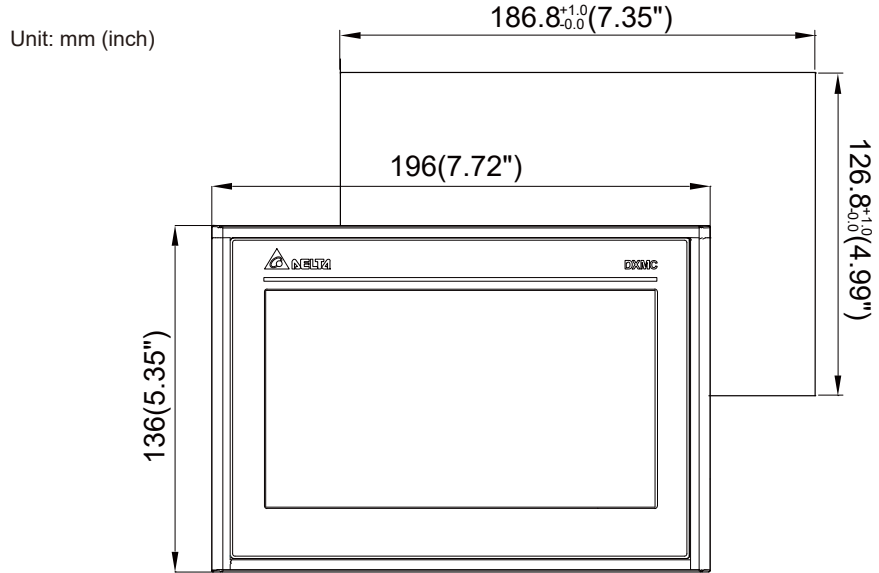
Unit: mm



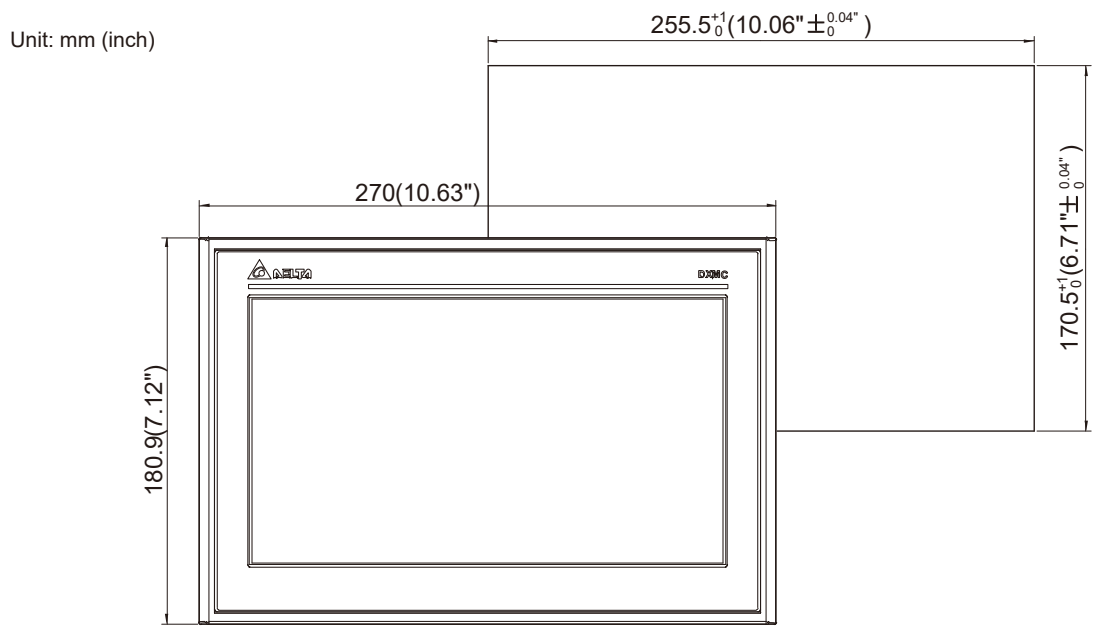


# Dimensions

## DXMC-1P08NE-7S



## DXMC-1P08NE-A0

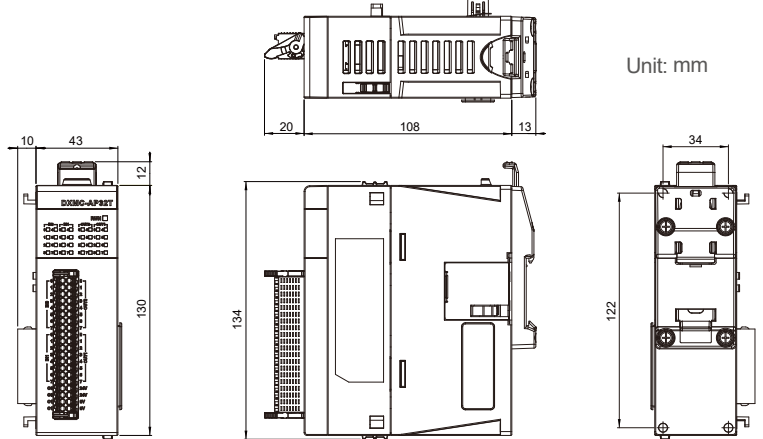
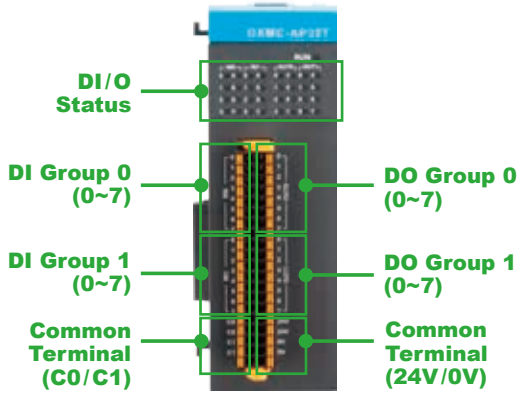


# I/O Modules

## DI/DO Module

Developing

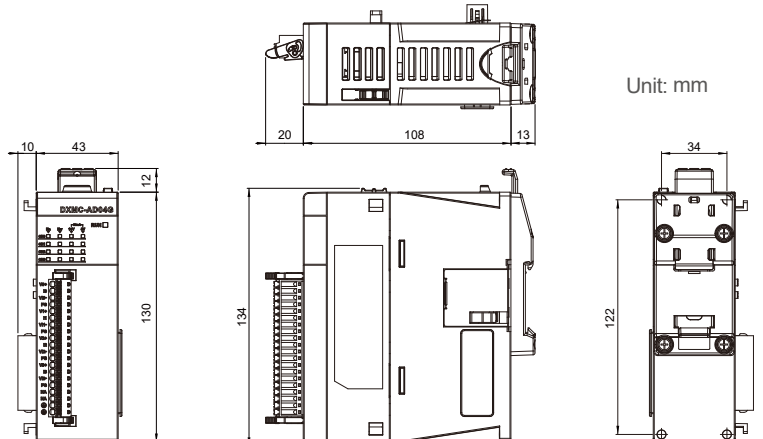
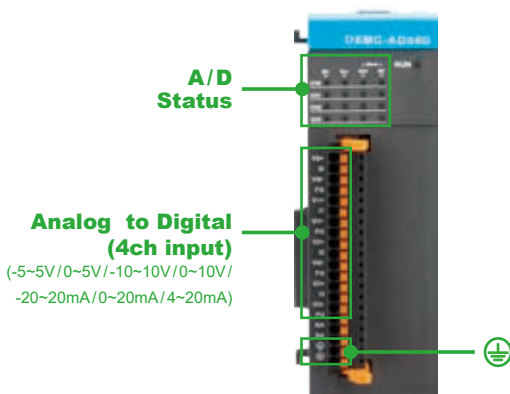
AP32T



## A/D Module

Developing

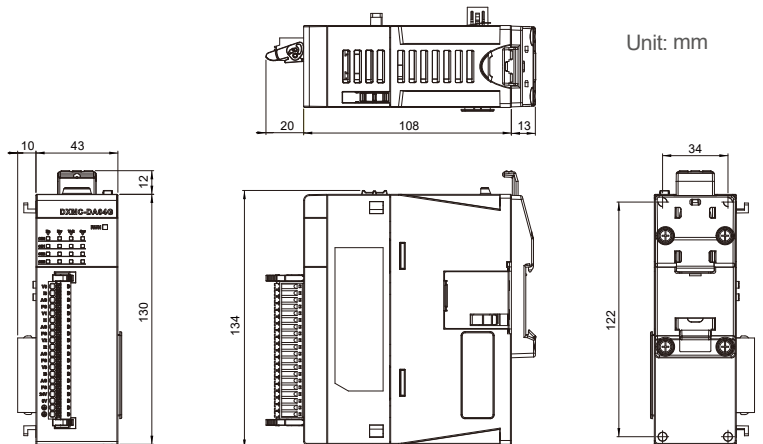
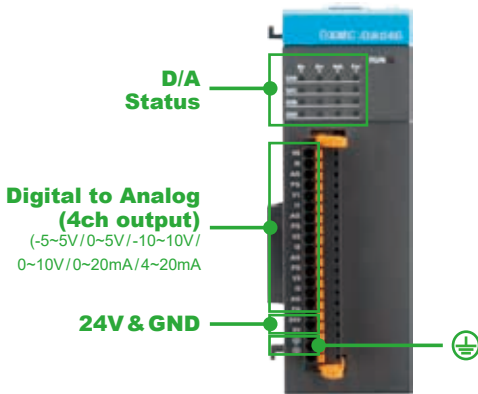
AD04G



## D/A Module

Developing

DA04G



# Product Information- ASDA-A3 Series Servo Drives

## Model Name Explanation



**ASD - A3 - 04 21 - L**

**Product Name:**  
AC Servo Drive

**Series:**  
ASDA-A3 Series

**Model Type**  
(see the table below)

**Input Voltage and Phase**  
21: 220V 1-phase / 3-phase  
23: 220V 3-phase



**Rated Output Power**  
01: 100 W      10: 1 kW  
02: 200 W      15: 1.5 kW  
04: 400 W      20: 2 kW  
07: 750 W      30: 3 kW

Type	PT Mode Pulse Train	PR Mode	RS-485	CANopen	DMCNET	EtherCAT	Full-closed Loop Control	Analog Voltage Control	E-CAM	STO
L	○	○	○	X	X	X	○	○	○	X
M	○	○	○	○	X	X	○	○	○	○
F	X	○	X	X	○	X	○	X	○	X
E*	X	○	X	X	X	○	○	X	○	○

Note: Models with a \* mark are the ones to be launched.

# Product Information- ASDA-A3 Series Servo Drives

## Servo Drive Dimensions

ASDA-A3		100 W	200 W	400 W	750 W	1 kW	1.5 kW	2 kW	3 kW	
		01	02	04	07	10	15	20	30	
Power Supply	Phase / Voltage	Single-phase / three-phase 220 VAC						Three-phase 220 VAC		
	Permissible Voltage Range	Single-phase / three-phase 200~230 VAC, -15%~10%						Three-phase 200~230 VAC, -15%~10%		
	Input Current (3PH) (Units: Arms)	0.67	1.34	2.67	5.01	6.68	10.02	13.36	20.05	
	Input Current (1PH) (Units: Arms)	1.16	2.31	4.63	8.68	11.57	17.36	-	-	
	Continuous Output Current (Units: Arms)	0.9	1.55	2.65	5.1	7.3	12.6	13.4	19.4	
Instantaneous Maximum Output Current (Units: Arms)		3.54	7.07	10.61	21.21	24.75	35.36	53.03	70.71	
Cooling System		Natural Air Circulation			Fan Cooling					
Drive Resolution		24-bit (16777216 p/rev)								
Control of Main Circuit		SVPWM Control								
Tuning Modes		Auto / Manual								
Regenerative Resistor		None			Built-in					
Position Control Mode	Pulse Type (Only for Non-DMCNET mode)	Pulse + Direction, A phase + B + CW pulse								
	Max. Input Pulse Frequency (Only for Non-DMCNET mode)	Pulse + Direction: 4Mpps ; CCW pulse + CW pulse: 4Mpps ; A phase + B phase: Single phase 4Mpps ; Max. 200Kpps (Open collector) pps								
	Command Source	External pulse train (PT mode) (only for Non-DMCNET mode) / Internal parameters (PR mode)								
	Smoothing Strategy	Low-pass and P-curve filter								
	Electronic Gear	Electronic gear N/M multiple N: 1~536870911, M: 1~2147483647 (1/4< N/M < 262144)								
	Torque Limit Operation	Set by parameters								
	Feed Forward Compensation	Set by parameters								
Speed Control Mode	Analog Input Command (Only for Non-DMCNET mode)	Voltage Range	0 ~ ±10 V <sub>DC</sub>							
		Resolution	15-bit							
		Input Resistance	1MΩ							
		Time Constant	25 μs							
	Speed Control Range <sup>*1</sup>	1 : 6000								
	Command Source	External analog signal (only for Non-DMCNET mode) / Internal parameters								
	Smoothing Strategy	Low-pass and S-curve filter								
Torque Limit Operation	Set by parameters or analog input (only for Non-DMCNET mode)									
Frequency Response Characteristic	Maximum 3.1kHz									
Speed Accuracy <sup>*2</sup>	0.01% or less at 0 to 100% load fluctuation									
	0.01% or less at ±10% power fluctuation									
	0.01% or less at 0°C to 50°C ambient temperature fluctuation									
Torque Control Mode	Analog Input Command (Only for Non-DMCNET mode)	Voltage Range	0 ~ ±10 V <sub>DC</sub>							
		Input Resistance	1MΩ							
		Time Constant	25 μs							
	Command Source	External analog signal (only for Non-DMCNET mode) / Internal parameters								
	Smoothing Strategy	Low-pass filter								
Speed Limit	Set by parameters or analog input (only for Non-DMCNET mode)									
Analog Monitor Output		Monitor signal can set by parameters (output voltage range: ±8V)								
Digital Inputs / Outputs	Inputs	Servo on, Reset, Gain switching, Pulse clear, Zero speed CLAMP, Command input reverse control, Command triggered, Speed/Torque limit enabled, Position command selection, Motor stop, Speed position selection, Position / Speed mode switching, Speed / Torque mode switching, Torque / Position mode switching, PT / PR command switching, Emergency stop, Forward / Reverse inhibit limit, Reference "Home" sensor, Forward / Reverse operation torque limit, Move to "Home", Electronic Cam (E-Cam), Forward / Reverse JOG input, Event trigger PR command, Electronic gear ratio (Numerator) selection and Pulse inhibit input  <small>* Please note that the above digital signals and inputs are available only for Non-DMCNET mode. In DMCNET mode, it is recommended to write digital inputs into the servo drives through DMCNET communication, and the digital inputs should be used for Emergency Stop, Forward / Reverse / Inhibit limit and Reference "Home" sensor only.</small>								
	Outputs	Encoder signal output (A, B, Z Line Driver and Z Open Collector)  Servo ready, Servo on, At Zero speed, At Speed reached, At Positioning completed, At Torques limit, Servo alarm (Servo fault) activated, Electromagnetic brake control, Homing completed, Output overload warning, Servo warning activated, Position command overflow, Forward / Reverse software limit, Internal position command completed, Capture operation completed output., Motion control completed output., Master position of E-Cam (Electronic Cam)								
Protective Functions		Overcurrent, Overvoltage, Undervoltage, Motor overheated, Regeneration error, Overload, Overspeed, Abnormal pulse control command, Excessive deviation, Encoder error, Adjustment error, Emergency stop activated, Reverse/ Forward limit switch error, Position excessive deviation of full-close control loop, Serial communication error, Input power phase loss, Serial communication time out, short circuit protection of U, V, W, and CN1, CN2, CN3 terminals								
Communication Interface		RS-485 / CANopen / USB								
Environment	Installation Site	Indoor environment (free of direct sunlight), no corrosive liquid and gas (free of oil mist, flammable gas, or dust)								
	Altitude	Altitude 1000m or lower above sea level								
	Atmospheric Pressure	86kPa ~ 106kPa								
	Operating Temperature	0°C ~ 55°C (If operating temperature is above 45°C, forced cooling will be required)								
	Storage Temperature	-20 °C ~ 65 °C								
	Humidity	0 ~ 90% RH (non-condensing)								
	Vibration	9.80665 m/s <sup>2</sup> (1G) less than 20Hz, 5.88 m/s <sup>2</sup> (0.6G) 20 to 50Hz								
	IP Rating	IP20								
	Power System	TN System <sup>*3,4</sup>								
Certification		IEC/EN 61800-5-1 · UL 508C  								

Note: \*1. When it is with the rated load, the speed ratio is: the minimum speed (smooth operation) / rated speed.

\*2. When the command is the rated speed, the velocity correction ratio is: (free run speed - full load speed) / rated speed

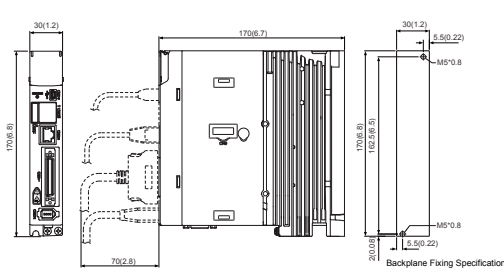
\*3. TN system: The neutral point of the power system connects to the ground directly. The exposed metal components connect to the ground via the protective earth conductor.

\*4. Use a single-phase three-wire power systems for models of single-phase power

Unit: mm [inch]

## Frame A 100W / 200W

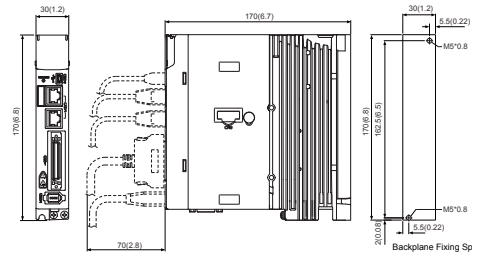
**Weight**  
0.84 kg



④④ SCREW: M4x0.7  
●● Mounting screw torque: 14 (kgf-cm)

Unit: mm (inch)

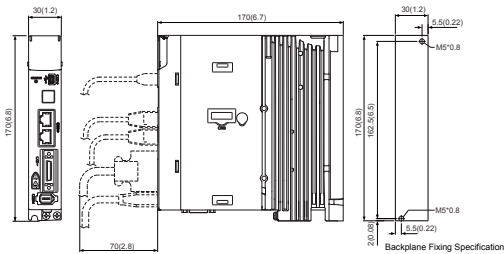
-L



④④ SCREW: M4x0.7  
●● Mounting screw torque: 14 (kgf-cm)

Unit: mm (inch)

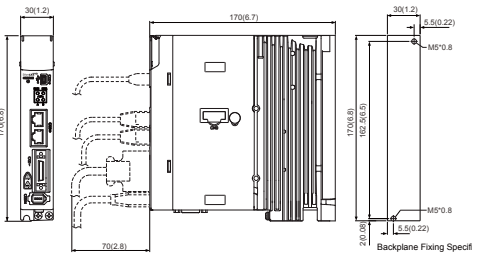
-M



④④ SCREW: M4x0.7  
●● Mounting screw torque: 14 (kgf-cm)

Unit: mm (inch)

-F



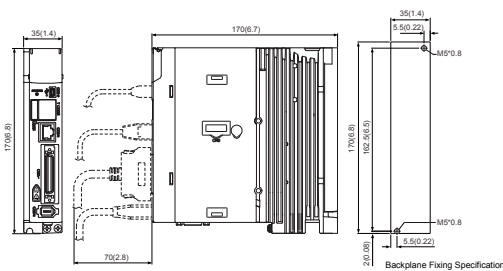
④④ SCREW: M4x0.7  
●● Mounting screw torque: 14 (kgf-cm)

Unit: mm (inch)

-E

## Frame B 400W

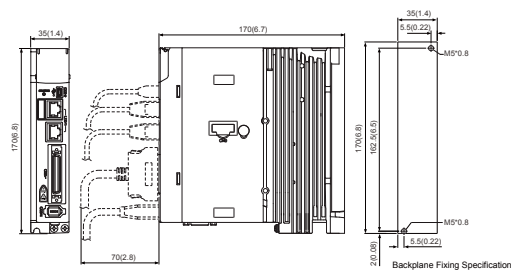
**Weight**  
0.92kg



④④ SCREW: M4x0.7  
●● Mounting screw torque: 14 (kgf-cm)

Unit: mm (inch)

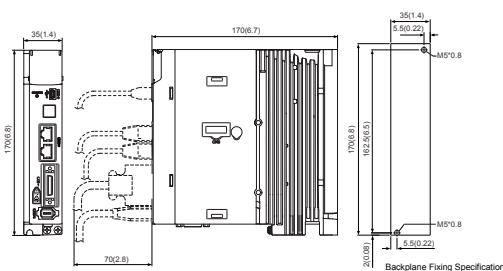
-L



④④ SCREW: M4x0.7  
●● Mounting screw torque: 14 (kgf-cm)

Unit: mm (inch)

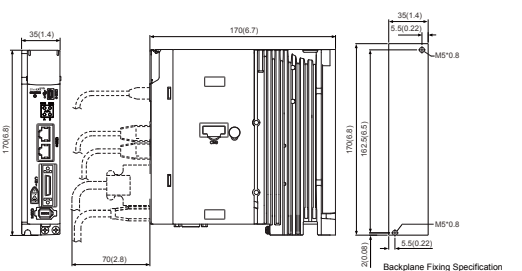
-M



④④ SCREW: M4x0.7  
●● Mounting screw torque: 14 (kgf-cm)

Unit: mm (inch)

-F



④④ SCREW: M4x0.7  
●● Mounting screw torque: 14 (kgf-cm)

Unit: mm (inch)

-E

- Note:
1. Dimensions are in millimeters (inches); Weights are in kilograms (kg) and pounds (lbs).
  2. Dimensions and weights of the servo drive may be revised without prior notice.

# Product Information- ASDA-A3 Series Servo Drives

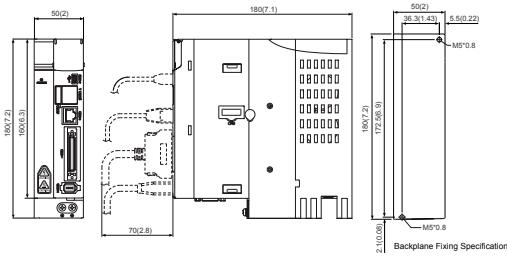
## Dimensions

**Frame C**  
750W / 1kW / 1.5kW

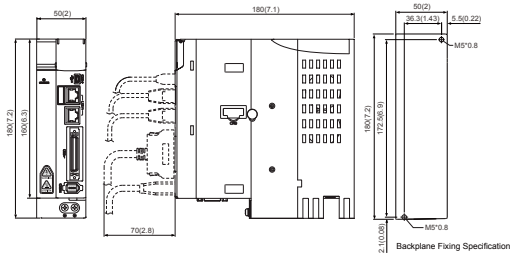
Unit: mm [inch]

**Weight**

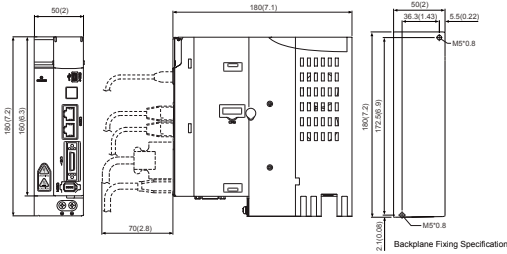
1.3kg



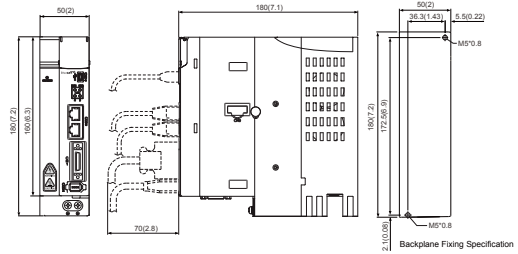
-L



-M



-F

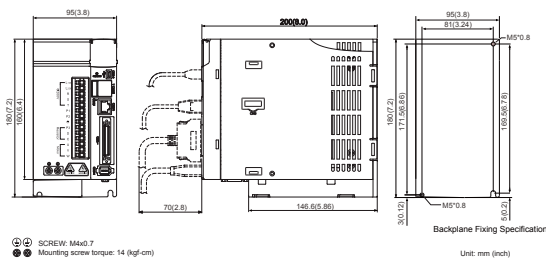


-E

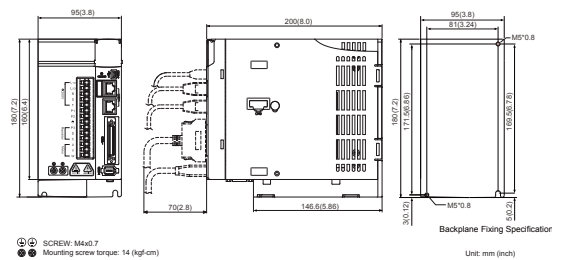
**Frame D**  
2kW / 3kW

**Weight**

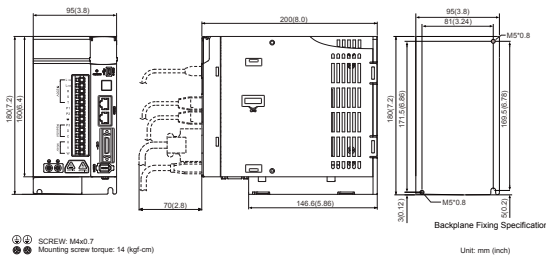
2.7kg



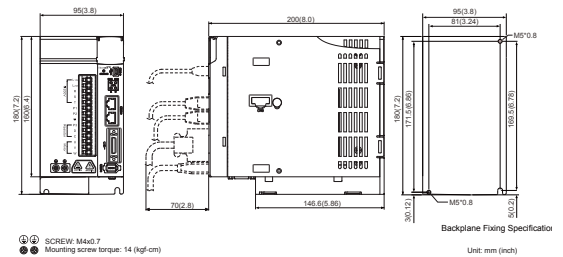
-L



-M



-F



-E

Note:

1. Dimensions are in millimeters (inches); Weights are in kilograms (kg) and pounds (lbs).
2. Dimensions and weights of the servo drive may be revised without prior notice.

# Product Information- ECM-A3 Series Servo Motors

## Model Name Explanation

ECM - A 3 H - C Y 06 04 R S 1

**Product Name**

ECM: Electrical Commutation Motor

**Driving Type**

A: A Series

**Generation**

3: 3<sup>rd</sup> Generation

**Inertia**

H: High inertia  
L: Low inertia

**Series Rated Voltage / Rated Speed**

C: Rated Voltage 220 V  
Rated Speed 3,000 r/min

**Encoder Type**

Y: 24-bit Absolute Optical Encoder  
Single-turn: 24-bit  
Multi-turn: 16-bit  
1: 24-bit Single-turn Absolute Optical Encoder  
G: 16-bit Single-turn Absolute Magnetic Encoder  
2: 24-bit Single-turn Absolute Magnetic Optical Encoder  
A: 24-bit Absolute Magnetic Optical Encoder  
Single-turn: 24-bit  
Multi-turn: 16-bit

**Special Digit**

1: Standard product

**Shaft Size**

S: Standard  
7: Special (14 mm)

Shaft and Oil Seal	W/O Brake	With Brake	W/O Brake	With Brake
	W/O Oil Seal	W/O Oil Seal	With Oil Seal	With Oil Seal
Round Shaft (with screw hole)	-	-	C	D
Keyway (with screw hole)	P	Q	R	S

**Rated Output Power**

0F: 50 W  
01: 100 W  
02: 200 W  
04: 400 W  
07: 750 W

**Motor Frame Size**


04: 40 mm  
06: 60 mm  
08: 80 mm

\*To be launched



# Product Information- ECM-A3 Series Servo Motors Specifications

## Low Inertia ECM-A3L Series

ECM-A3L Series	C104		C106		C108	
	0F	01	02	04	04	07
Rated Output Power (kW)	0.05	0.1	0.2	0.4	0.4	0.75
Rated Torque (N-m) <sup>1</sup>	0.159	0.32	0.64	1.27	1.27	2.39
Maximum Torque (N-m)	0.557	1.12	2.24	4.45	4.44	8.36
Rated Speed (r/min)	3000					
Maximum Speed (r/min)	6000					
Rated Current (Arms)	0.66	0.9	1.45	2.65	2.6	5.1
Maximum Current (Arms)	2.82	3.88	6.2	10.1	10.6	20.6
Power Rating (kW/s)	11	25.6	45.5	107.5	45.8	102.2
Rotor Moment of Inertia (x10 <sup>-4</sup> kg-m <sup>2</sup> ) (Without brake)	0.0229	0.04	0.09	0.15	0.352	0.559
Mechanical Time Constant (ms)	1.28	0.838	0.64	0.41	0.68	0.44
Torque Constant (N-m/A)	0.241	0.356	0.441	0.479	0.488	0.469
Voltage Constant-KE (mV/(r/min))	9.28	13.3	16.4	18.0	17.9	17
Armature Resistance (Ohm)	12.1	9.47	4.9	2.27	1.6	0.6
Armature Inductance (mH)	18.6	16.2	18.52	10.27	10.6	4.6
Electrical Time Constant (ms)	1.54	1.71	3.78	4.52	6.63	7.67
Insulation Class	Class A (UL), Class B (CE)					
Insulation Resistance	100 MΩ, DC 500V above					
Insulation Strength	1.8k Vac, 1 sec					
Weight (kg) (without brake)	0.38	0.5	1.1	1.4	2.05	2.8
Weight (kg) (with brake)	0.68	0.8	1.6	1.9	2.85	3.6
Max. Radial Shaft Load (N)	78	78	245	245	392	392
Max. Thrust Shaft Load (N)	54	54	74	74	147	147
Power Rating (kW/s) (with brake)	9.9	24	34.1	89.6	39.5	93
Rotor Moment of Inertia (x10 <sup>-4</sup> kg-m <sup>2</sup> ) (with brake)	0.0255	0.0426	0.12	0.18	0.408	0.614
Mechanical Time Constant (ms) (with brake)	1.44	0.892	0.85	0.5	0.78	0.48
Brake Holding Torque [Nt-m (min)] <sup>2</sup>	0.32	0.32	1.3	1.3	2.5	2.5
Brake Power Consumption (at 20°C) [W]	6.1	6.1	7.2	7.2	8	8
Brake Release Time [ms (Max)]	20	20	20	20	20	20
Brake Pull-in Time [ms (Max)]	35	35	50	50	60	60
Vibration Grade (μm)	V15					
Operating Temperature (°C)	0°C ~ 40°C					
Storage Temperature (°C)	-10°C ~ 80°C					
Operating Humidity	20 to 90%RH (non-condensing)					
Storage Humidity	20 to 90%RH (non-condensing)					
Vibration Capacity	2.5G					
IP Rating	IP65 (when waterproof connectors are used, or when an oil seal is used to be fitted to the rotating shaft)					
Certification						

Note:

1. The rated torque is the permissible continuous torque at the operation temperature of 0~40°C when the following heat sink is applied:

ECM-A3: 04/06/ 08 : 250 mm x 250mm x 6mm

Material type: Aluminum- F40, F60, F80

2. The built-in brake of the servo motor is for clamping the shaft. Never use it for decelerating or stopping the motor



# Specifications

## High Inertia ECM-A3H Series

ECM-A3H Series	C104		C106		C108	
	0F	01	02	04	04	07
Rated Output Power (kW)	0.05	0.1	0.2	0.4	0.4	0.75
Rated Torque (N-m) <sup>1</sup>	0.159	0.32	0.64	1.27	1.27	2.39
Maximum Torque (N-m)	0.557	1.12	2.24	4.45	4.44	8.36
Rated Speed (r/min)	3000					
Maximum Speed (r/min)	6000					
Rated Current (Arms)	0.64	0.9	1.45	2.65	2.6	4.61
Maximum Current (Arms)	2.59	3.64	5.4	9.8	9.32	16.53
Power Rating (kW/s)	5.56	13.6	16.4	35.8	17.5	37.8
Rotor Moment of Inertia (x10 <sup>-4</sup> kg-m <sup>2</sup> ) (Without brake)	0.0455	0.0754	0.25	0.45	0.92	1.51
Mechanical Time Constant (ms)	2.52	1.43	1.38	0.96	1.32	0.93
Torque Constant (N-m/A)	0.248	0.356	0.441	0.479	0.49	0.52
Voltage Constant-KE (mV/(r/min))	9.54	12.9	16.4	17.2	17.9	18.7
Armature Resistance (Ohm)	12.5	8.34	3.8	1.68	1.19	0.57
Armature Inductance (mH)	13.34	11	8.15	4.03	4.2	2.2
Electrical Time Constant (ms)	1.07	1.32	2.14	2.40	3.53	3.86
Insulation Class	Class A (UL), Class B (CE)					
Insulation Resistance	100 MΩ, DC 500V above					
Insulation Strength	1.8k Vac, 1 sec					
Weight (kg) (without brake)	0.38	0.5	1.1	1.4	2.05	2.8
Weight (kg) (with brake)	0.68	0.8	1.6	1.9	2.85	3.6
Max. Radial Shaft Load (N)	78	78	245	245	392	392
Max. Thrust Shaft Load (N)	54	54	74	74	147	147
Power Rating (kW/s)(with brake)	4.89	12.5	14.6	33.6	15.07	34.41
Rotor Moment of Inertia (x10 <sup>-4</sup> kg-m <sup>2</sup> ) (with brake)	0.0517	0.0816	0.28	0.48	1.07	1.66
Mechanical Time Constant (ms) (with brake)	2.86	1.55	1.54	1.02	1.54	1.02
Brake Holding Torque [Nt-m (min)] <sup>2</sup>	0.32	0.32	1.3	1.3	2.5	2.5
Brake Power Consumption (at 20°C) [W]	6.1	6.1	7.2	7.2	8	8
Brake Release Time [ms (Max)]	20	20	20	20	20	20
Brake Pull-in Time [ms (Max)]	35	35	50	50	60	60
Vibration Grade (μm)	V15					
Operating Temperature (°C)	0°C ~ 40°C					
Storage Temperature (°C)	-10°C ~ 80°C					
Operating Humidity	20 to 90%RH (non-condensing)					
Storage Humidity	20 to 90%RH (non-condensing)					
Vibration Capacity	2.5G					
IP Rating	IP65 (when waterproof connectors are used, or when an oil seal is used to be fitted to the rotating shaft)					
Certification	CE					

Note:

1. ECM-A3: \_\_04/06/08: 250 mm x 250mm x 6mm

The rated torque is the permissible continuous torque at the operation temperature of 0~40°C when the following heat sink is applied:

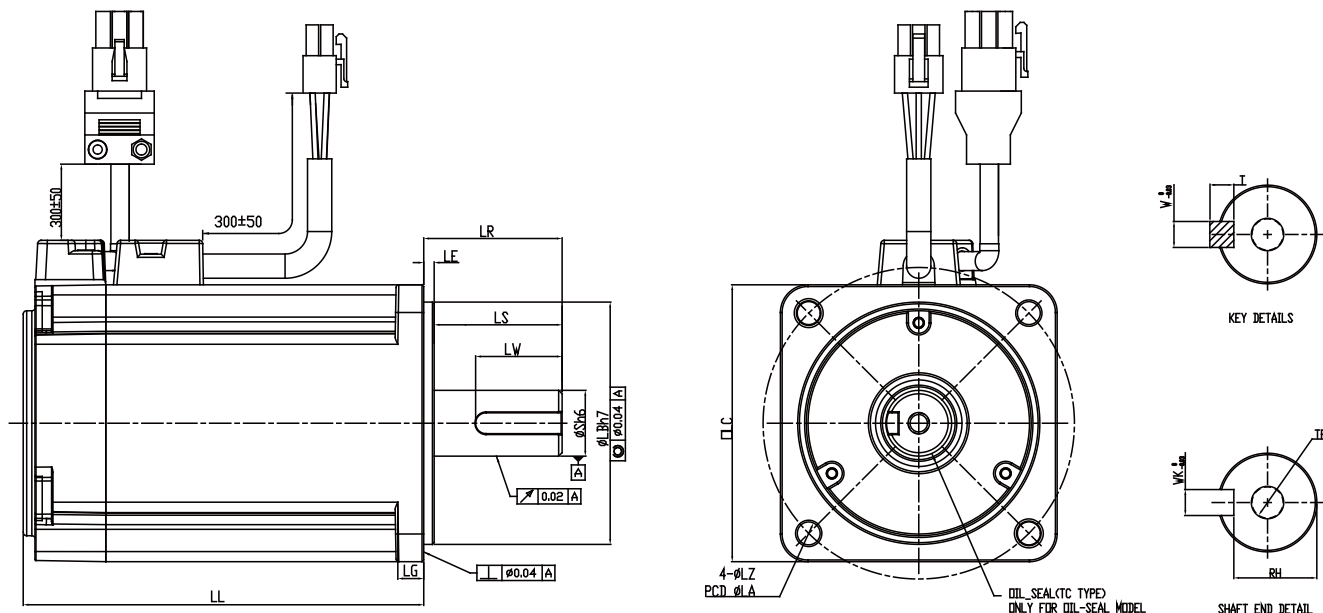
Material: aluminum - F40, F60, F80

2. The built-in brake of the servo motor is for clamping the shaft. Never use it for decelerating or stopping the motor.

# Product Information- ECM-A3 Series Servo Motors

## Dimensions

### Frame Size 80 mm and Below



Units: mm

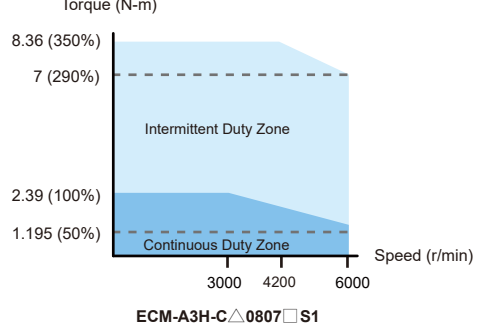
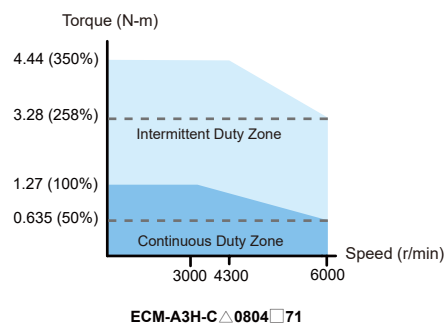
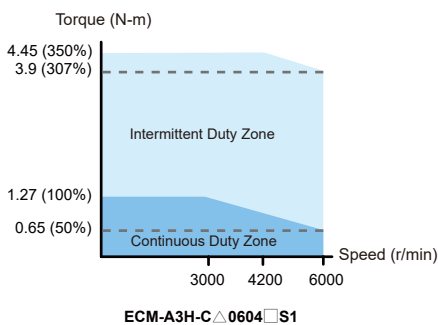
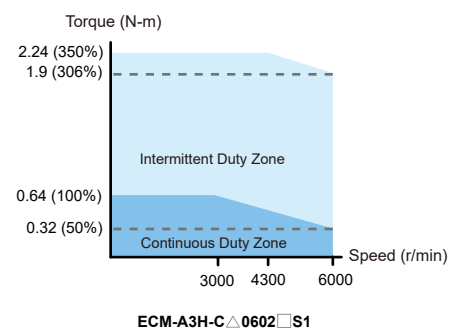
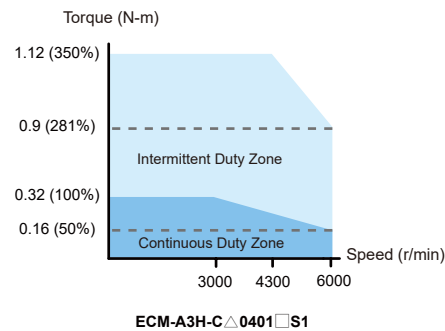
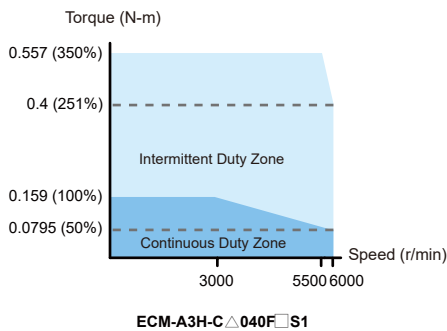
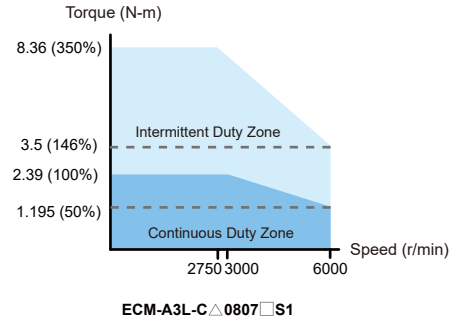
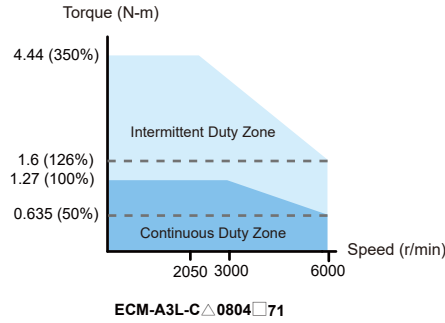
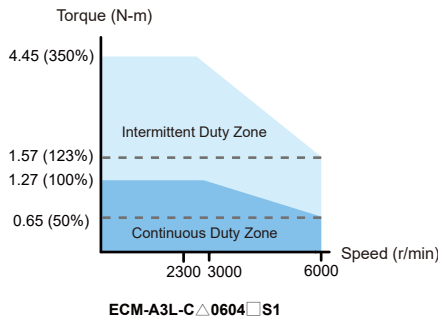
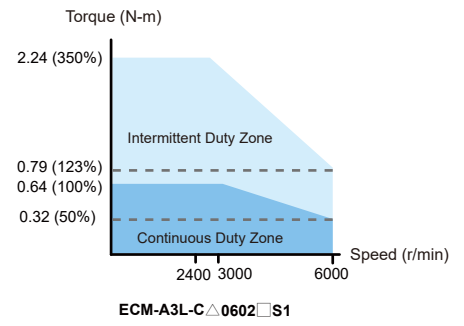
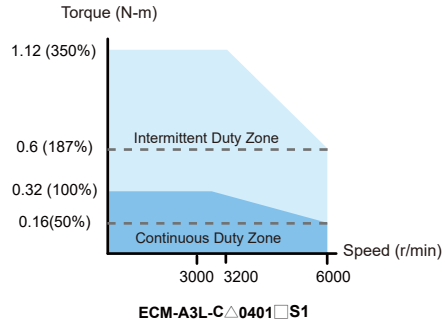
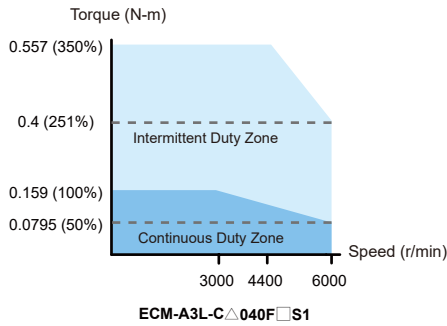
Model	C [1] 040F [2] S [3] <sup>*1</sup>	C [1] 0401 [2] S [3]	C [1] 0602 [2] S [3]	C [1] 0604 [2] S [3]	C [1] 0804 [2] 7 [3]	C [1] 0807 [2] S [3] <sup>*2</sup>
LC	40	40	60	60	80	80
LZ	4.5	4.5	5.5	5.5	6.6	6.6
LA	46	46	70	70	90	90
S	8 (+0/-0.009)	8 (+0/-0.009)	14 (+0/-0.011)	14 (+0/-0.011)	14 (+0/-0.011)	19 (+0/-0.013)
LB	30 (+0/-0.021)	30 (+0/-0.021)	50 (+0/-0.025)	50 (+0/-0.025)	70 (+0/-0.03)	70 (+0/-0.03)
LL (w/o Brake)	70.6	85.3	84	106	93.7	115.8
LL (with Brake)	105.4	120.1	117.6	139.7	131.2	153.2
LS	21.5	22.5	27	27	27	37
LR	25	25	30	30	30	40
LE	2.5	2.5	3	3	3	3
LG	5	5	7.5	7.5	8	8
LW	16	16	20	20	20	25
RH	6.2	6.2	11	11	11	15.5
WK	3	3	5	5	5	6
W	3	3	5	5	5	6
T	3	3	5	5	5	6
TP	M3 Depth 6	M3 Depth 6	M4 Depth 8	M4 Depth 8	M4 Depth 8	M6 Depth 10

Note:

\*1. In servo motor model names, [1] signifies encoder type, [2] signifies shaft diameter and oil seal, and [3] signifies special code

\*2. When [3] of Model 807 is Z, LS=32, LR=35

## Speed-Torque Curves (T-N Curves)





Smarter. Greener. Together.

## Industrial Automation Headquarters

### Delta Electronics, Inc.

Taoyuan Technology Center  
No.18, Xinglong Rd., Taoyuan District,  
Taoyuan City 33068, Taiwan  
TEL: 886-3-362-6301 / FAX: 886-3-371-6301

## Asia

### Delta Electronics (Shanghai) Co., Ltd.

No.182 Minyu Rd., Pudong Shanghai, P.R.C.  
Post code : 201209  
TEL: 86-21-6872-3988 / FAX: 86-21-6872-3996  
Customer Service: 400-820-9595

### Delta Electronics (Japan), Inc.

Tokyo Office  
Industrial Automation Sales Department  
2-1-14 Shibadaimon, Minato-ku  
Tokyo, Japan 105-0012  
TEL: 81-3-5733-1155 / FAX: 81-3-5733-1255

### Delta Electronics (Korea), Inc.

Seoul Office  
1511, 219, Gasan Digital 1-Ro., Geumcheon-gu,  
Seoul, 08501 South Korea  
TEL: 82-2-515-5305 / FAX: 82-2-515-5302

### Delta Energy Systems (Singapore) Pte Ltd.

4 Kaki Bukit Avenue 1, #05-04, Singapore 417939  
TEL: 65-6747-5155 / FAX: 65-6744-9228

### Delta Electronics (India) Pvt. Ltd.

Plot No.43, Sector 35, HSIIDC Gurgaon,  
PIN 122001, Haryana, India  
TEL: 91-124-4874900 / FAX : 91-124-4874945

### Delta Electronics (Thailand) PCL.

909 Soi 9, Moo 4, Bangpoo Industrial Estate (E.P.Z),  
Pattana 1 Rd., T.Phraksa, A.Muang,  
Samutprakarn 10280, Thailand  
TEL: 66-2709-2800 / FAX : 662-709-2827

### Delta Electronics (Australia) Pty Ltd.

Unit 20-21/45 Normanby Rd., Notting Hill Vic 3168, Australia  
TEL: 61-3-9543-3720

## Americas

### Delta Electronics (Americas) Ltd.

Raleigh Office  
P.O. Box 12173, 5101 Davis Drive,  
Research Triangle Park, NC 27709, U.S.A.  
TEL: 1-919-767-3813 / FAX: 1-919-767-3969

### Delta Greentech (Brasil) S/A

São Paulo Office  
Rua Itapeva, 26 – 3º Andar - Bela Vista  
CEP: 01332-000 – São Paulo – SP - Brasil  
TEL: 55-11-3530-8643 / 55-11-3530-8640

### Delta Electronics International Mexico S.A. de C.V.

Mexico Office  
Gustavo Baz No. 309 Edificio E PB 103  
Colonia La Loma, CP 54060  
Tlalnepantla, Estado de México  
TEL: 52-55-3603-9200

## EMEA

### Headquarters: Delta Electronics (Netherlands) B.V.

Sales: Sales.IA.EMEA@deltaww.com  
Marketing: Marketing.IA.EMEA@deltaww.com  
Technical Support: iatechnicalsupport@deltaww.com  
Customer Support: Customer-Support@deltaww.com  
Service: Service.IA.emea@deltaww.com  
TEL: +31(0)40 800 3900

### BENELUX: Delta Electronics (Netherlands) B.V.

De Witbogt 20, 5652 AG Eindhoven, The Netherlands  
Mail: Sales.IA.Benelux@deltaww.com  
TEL: +31(0)40 800 3900

### DACH: Delta Electronics (Netherlands) B.V.

Coesterweg 45, D-59494 Soest, Germany  
Mail: Sales.IA.DACH@deltaww.com  
TEL: +49(0)2921 987 0

### France: Delta Electronics (France) S.A.

ZI du bois Challand 2, 15 rue des Pyrénées,  
Lisses, 91090 Evry Cedex, France  
Mail: Sales.IA.FR@deltaww.com  
TEL: +33(0)1 69 77 82 60

### Iberia: Delta Electronics Solutions (Spain) S.L.U

Ctra. De Villaverde a Vallecas, 265 1º Dcha Ed.  
Hormigueras – P.I. de Vallecas 28031 Madrid  
TEL: +34(0)91 223 74 20

Carrer Llacuna 166, 08018 Barcelona, Spain

Mail: Sales.IA.Iberia@deltaww.com

### Italy: Delta Electronics (Italy) S.r.l.

Via Meda 2-22060 Novedrate(CO)  
Piazza Grazioli 18 00186 Roma Italy  
Mail: Sales.IA.Italy@deltaww.com  
TEL: +39 039 8900365

### Russia: Delta Energy System LLC

Vereyskaya Plaza II, office 112 Vereyskaya str.  
17 121357 Moscow Russia  
Mail: Sales.IA.RU@deltaww.com  
TEL: +7 495 644 3240

### Turkey: Delta Greentech Elektronik San. Ltd. Sti. (Turkey)

Şerifaii Mah. Hendem Cad. Kule Sok. No:16-A  
34775 Ümraniye – İstanbul  
Mail: Sales.IA.Turkey@deltaww.com  
TEL: + 90 216 499 9910

### GCC: Delta Energy Systems AG (Dubai BR)

P.O. Box 185668, Gate 7, 3rd Floor, Hamarain Centre  
Dubai, United Arab Emirates  
Mail: Sales.IA.MEA@deltaww.com  
TEL: +971(0)4 2690148

### Egypt + North Africa: Delta Electronics

Unit 318, 3rd Floor, Trivium Business Complex, North 90 street,  
New Cairo, Cairo, Egypt  
Mail: Sales.IA.MEA@deltaww.com