



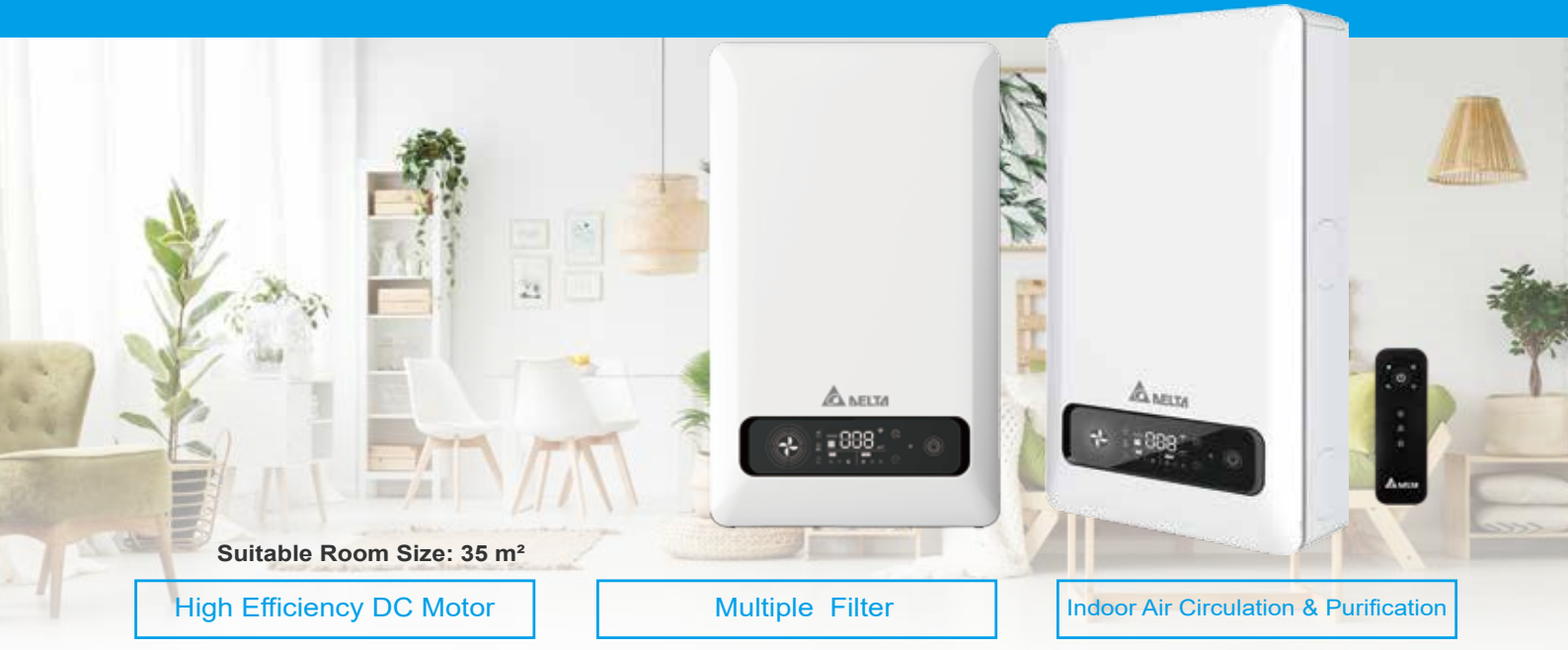
Delta Wall Mount Energy Recovery Ventilator (ERV)

Perfectly Green, Perfectly Quiet

www.DeltaThailand.com



Wall Mount Energy Recovery Ventilator (ERV) with PM2.5 Filtration



Suitable Room Size: 35 m²

High Efficiency DC Motor

Multiple Filter

Indoor Air Circulation & Purification

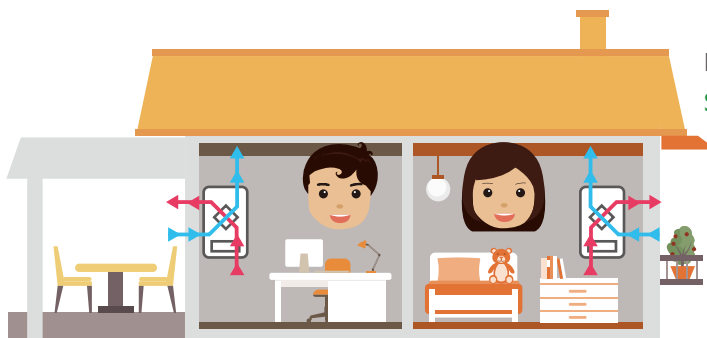
Silence Operation

Multiple Safety Protection

Three Years Warranty

Ideal for Separate Spaces

Delta ERV enables air exchange and filtration for separate spaces, improving indoor oxygen concentration - not only makes your living space healthier & comfortable, but saves bills.



Process air through ERV

Summer: Decreasing outside air temperature by 6.1°C

| Scenario | Indoor Air | Outdoor Air |
|----------|-------------------|---------------------|
| Summer | T: 26°C H: 60% | T: 36.2°C H: 68% |

T: Temperature/ H: Humidity

Ideal for Year-round Uses

Operating year-round, Delta ERV accommodates indoor temperature & humidity in different seasons and optimizes the functions of air conditioning. High efficiency motors save energy & save bills in the long term.



Outdoor

ERV functions with air conditioning (AC):

summer bill savings up to 41%



vs. Traditional ventilation equipment with AC motor

Annual AC power consumption

decreasing by 1 space between 766.5 KWh = THB \$2864 bill savings

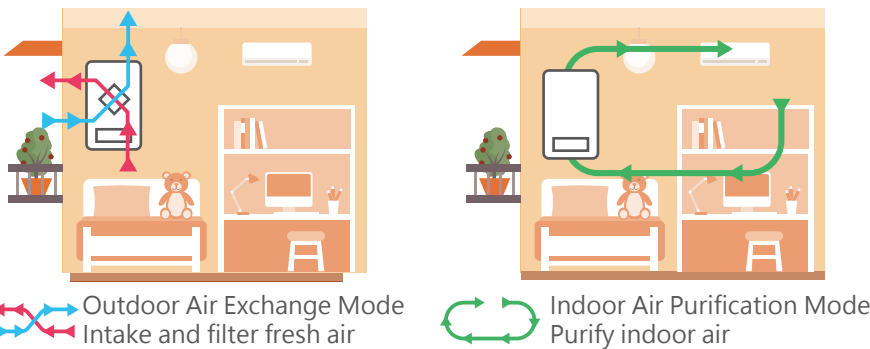
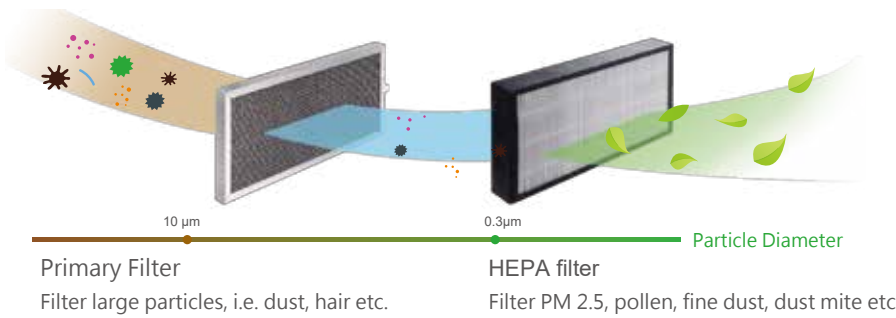
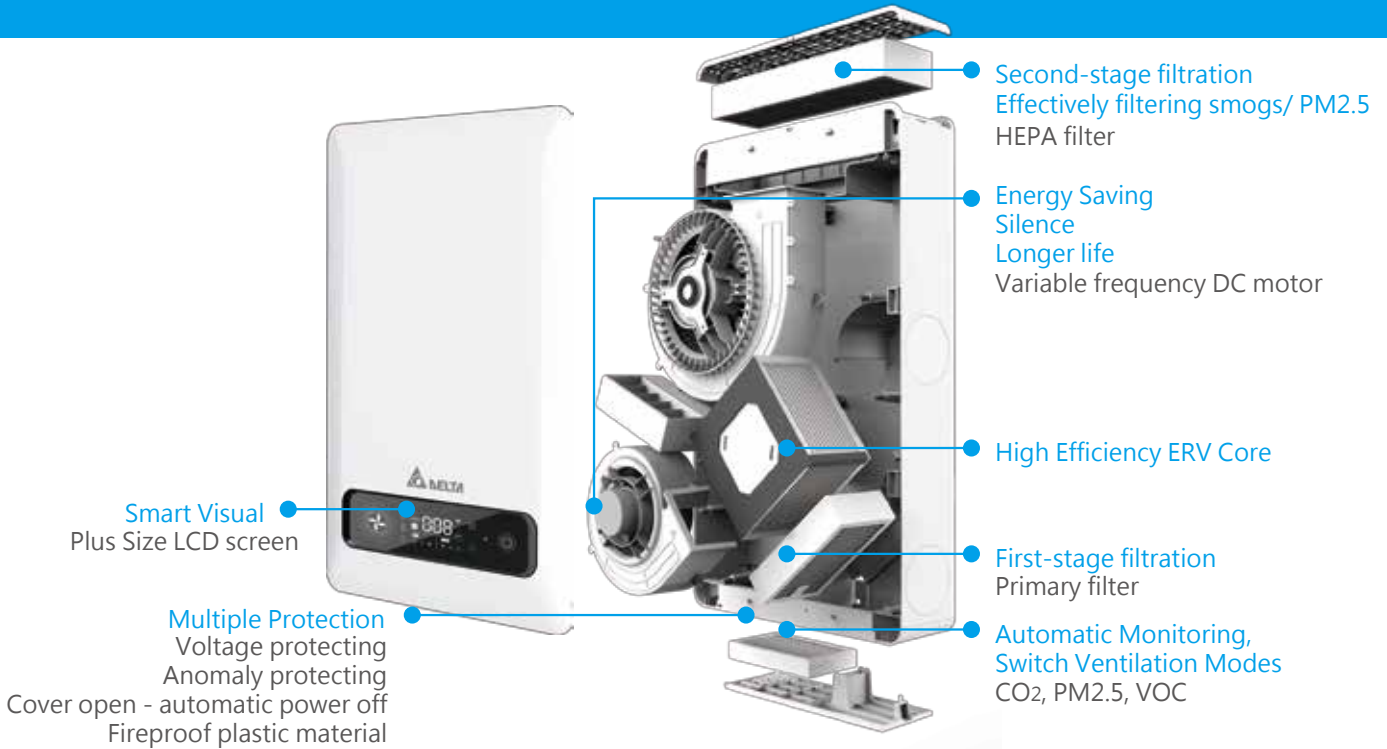
Annual carbon emission decrease more than 487 kg.



ERV: 24-hour operation, 2160 hours per season

AC: 9 hours daily operation, 810 hours per season (with rates THB\$3.7362 per KWh)

Double Filtration, Double Protection



Double Functions: Outdoor Air Exchange & Indoor Air Purification

Switch modes in different environment requirement by choice or automatic switch mode (smart monitoring).

Variable Frequency DC Motor



Permanent-magnet motor reduces power consumption, saving 60% more than AC motors, and with longer life.

In-time Environment Monitoring



Sensors embedded - CO₂, PM2.5, and VOC monitor - smart detection and control

Best Selection for Living Spaces

Installation



Best Use for Living Space
Ventilation/ Temperature & Humidity Control

Simple Installation
Simple Decoration

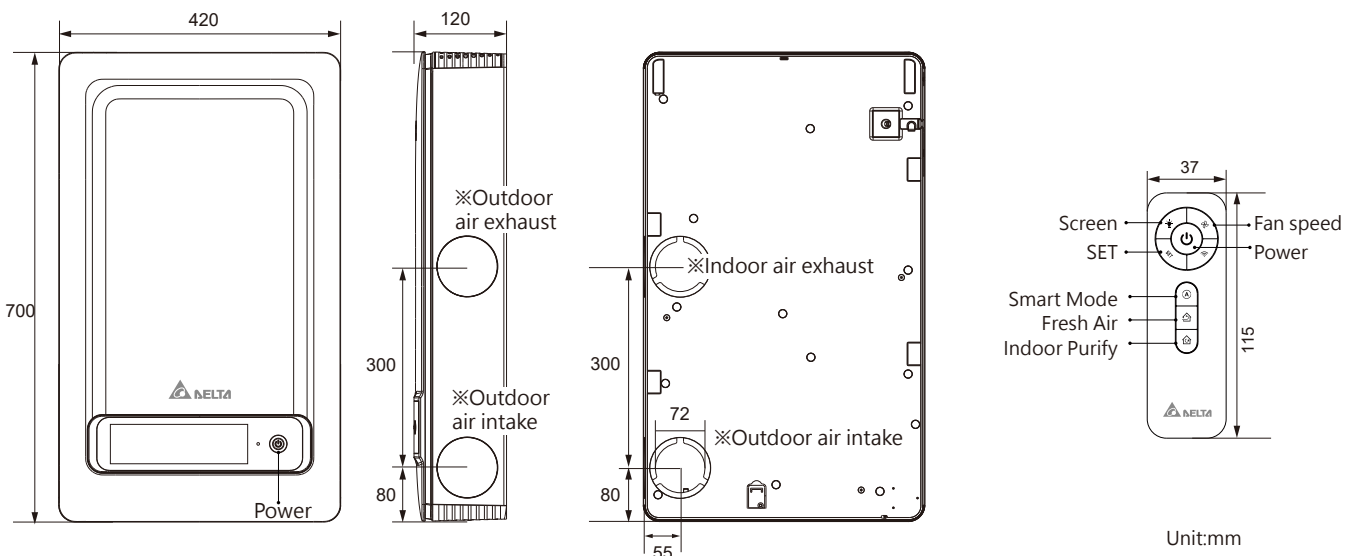
Simple Installation, Simple Decoration
Just install exhaust outlet on the outer wall - wall-mounted design - 220 Vac power applicable - convenient for house decoration

Specification

| Model | VEB100ATH-W | |
|----------------------------|-------------------|---------------|
| Suitable room size | 70 m ² | |
| Power supply | 220 Vac / 50 Hz | |
| Fan Speed | Three | |
| Maximum air volume | Air purification | 200 CMH |
| | Fresh air | 100 CMH |
| Energy recovery efficiency | Cooling | >50% @ 60 CMH |
| | Heating | >55% @ 60 CMH |
| Heat recovery efficiency | Cooling | >60% @ 60 CMH |
| | Heating | >70% @ 60 CMH |

| Model | VEB100ATH-W | |
|-------------------------------|-------------------------|-----------|
| Input Power | 10 - 45 W | |
| PM 2.5 Filtration efficiency | >98% | |
| Effective of Ventilation rate | >90% | |
| Control | Remote controller | |
| Dimension (W x D x H) | 420×120×700 mm | |
| Ducting size | 75 mm | |
| Weight | 10 kg | |
| Noise | Fresh Air mode | <35 dB(A) |
| | Indoor Air Purification | <45 dB(A) |

Dimension



※For different installation requirement : adjust the configuration for air exhaust/ air intake on right side or back of machine.