



Astra Outdoor Signage Lighting

Ultra uniform light effect

The Astra Outdoor Series is designed to meet the needs of the billboard/signboard and architectural lighting market. Its sophisticated asymmetric optics provide superb uniform illumination.

The Astra Outdoor Series illuminates areas up to 3 times as wide as regular flood lights and provides exceptionally uniform illumination while saving energy and reducing installation cost.



www.deltaww.com





Superb uniform wallwashing

Sophisticated asymmetric optical design, increases luminous efficiency and achieves ultra-uniform light distribution.



Wide luminaire spacing

Astra's asymmetric photometrics optimize its lighting distribution, enabling the Astra to be spaced up to 4 times the installation distance, while reducing the number of luminaires required.



Easy installation

The Astra Series provides uniform wallwashing without additional tilting or further adjustment.



Universal power input

The Astra Series covers all voltages from 120-277V



145w



40w



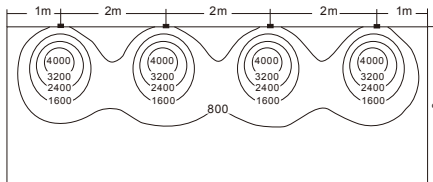
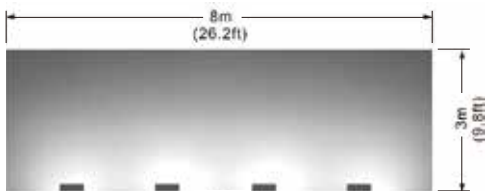
Lighting effect & simulation



Large billboard W8m * H3m

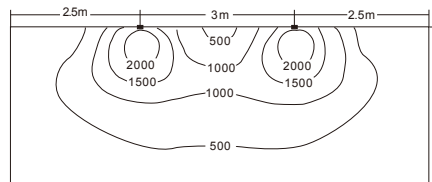
Install 1m to the billboard

Regular 120W Flood light * 4pcs



CCT: 5000K
Avg: 1075 lux
Min: 111 lux
Max: 4108 lux
Uniformity: 0.103

Astra 145W Flood light * 2pcs

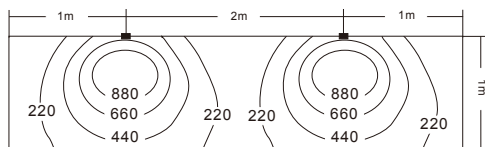
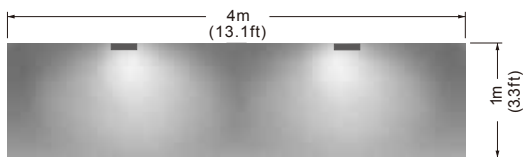


CCT: 5000K
Avg: 692 lux
Min: 169 lux
Max: 2287 lux
Uniformity: 0.25

Outdoor sign board W4m * H1m

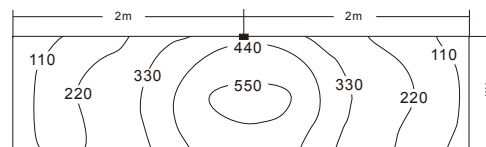
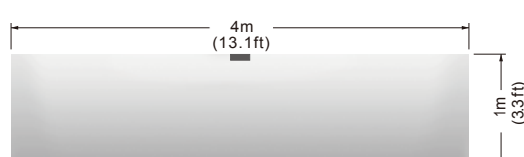
Install 1m to the wall

Regular 30W Spot light * 2 pcs



CCT: 5000K
Avg: 390 lux
Min: 3.35 lux
Max: 1002 lux
Uniformity: 0.008

Astra 40W Flood light * 1 pcs



CCT: 5000K
Avg: 317 lux
Min: 150 lux
Max: 558 lux
Uniformity: 0.473

Nomenclature

L T D A A C N J 4 0 A U 1 A
X1 X2 X3 X4

X1 Finished color	X2 CCT	X3 Wattage	X4 Regulation
C:Black	H: 3000K, Ra70 I: 4000K, Ra70 J: 5000K, Ra70	40: 40W A4: 145W	A: CE C: CCC U: UL

Astra Outdoor Signage Lighting

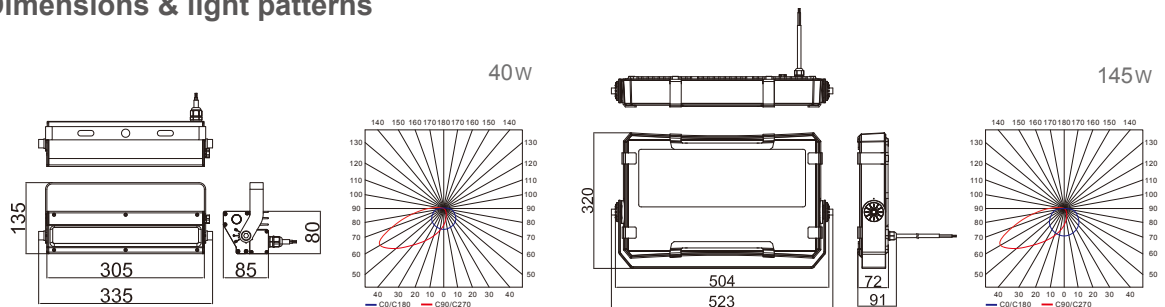


40W



145W

Dimensions & light patterns



Dimensions in mm

Technical specifications

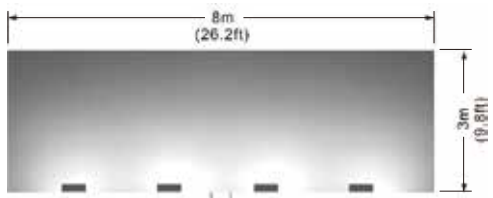
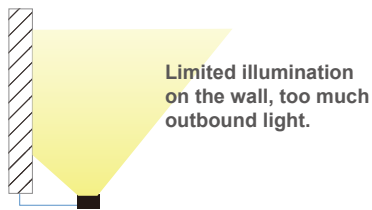
Performance	40W	145W
Color temp.	3000K : 2180 lm	3000K : 9200 lm
Lumen	4000K : 2400 lm 5000K : 2400 lm	4000K : 9200 lm 5000K : 10000 lm
CRI	>70 (STD) >80 (OPT)	>70 (STD) >80 (OPT)
Weight	2.4kg/5.29lbs	11.5kg/25.35lbs
Beam angle	120°/105° (Wall washing)	115°/105° (Wall washing)
Electrical		
DC power	40W	130W
System power	45W	145W
Input voltage	120 ~ 277V, 50/60Hz	120 ~ 277V, 50/60Hz
Power factor	>90%	>95%
THD	<20%	<20%
Physical		
Materials	Housing: Extruded aluminum, Die-casting aluminum	Housing: Die-casting aluminum
Optics	PC, Tempered glass	PC, Tempered glass
LED	CREE (XPL2)	CREE (XPL2)
Finish	Protective UV stabilized powder coated finish BLACK. Color available with RAL#(OPT)	
Environmental		
IP rating	IP65	IP66
Operating temp.	-40 ~ +45°C	-40 ~ +45°C
Surge protector	NA	IEC 61643 5kA

Optical expertise

The asymmetric optical design of the Astra outdoor signage luminaire illuminates the billboard with ample lumen output for optimal uniform illumination.

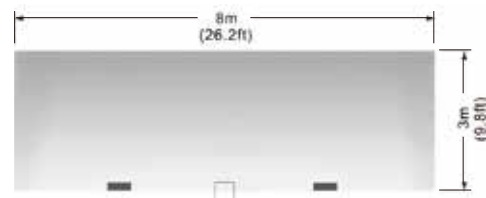
People can enjoy a soothing lighting environment with a uniform spread of light along the wall for perfect aesthetics.

Regular flood light



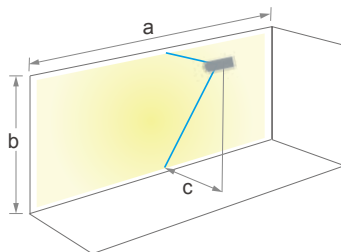
Central lux too high with bad uniformity and dark areas

Astra outdoor luminaire

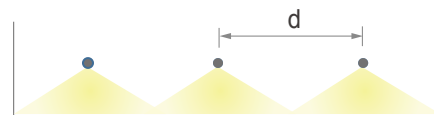


Good uniformity with ample light and wider illumination

Luminaire arrangement

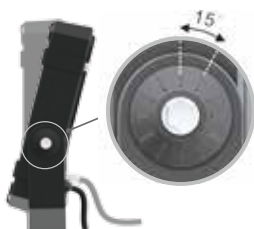


For uniform vertical illuminance
Arrangement: $c=1/4a$, $b=2c$



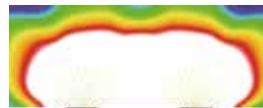
For good longitudinal uniformity
Arrangement: $d \leq 4c$

Installation recommendations



Tilt angle 0°

Obtain the maximum lumen output by installing the luminaire parallel to the billboard (wall).



Tilt angle 15°

To vary light distribution, rotate the axis angle 15° backward.



Note: An installation that is more vertical reduces dust deposits on the illumination side, which can lower the maintenance frequency.

Sophisticated and robust mechanical design



- Robust IP66 rated, IK06
- IEC 61643 5kA surge protection
- Water proof venting valves

Use of water proof venting valves can effectively block the invasion of moisture and dust. Continuous lighting will increase the chamber temperature, causing gas expansion and inside pressure. These effects will produce vapor in the fixture, and reduce the lumen output, uniformity and reliability.

Delta global operations



169 Global sales offices

38 Global plant sites

64 Global R&D centers



186 Ruey Kuang Road, Neihu, Taipei 11491, Taiwan, R.O.C.
 TEL : +886 2 8797 2088
 FAX : +886 2 6606 3308
 Email: LT.Sales@deltaww.com